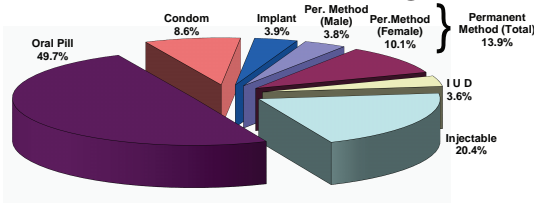


দুটি সন্তানের বেশী নয়
একটি হলে ভাল হয়

REPORT

August 2014

Method-Mix for the month of August 2014



FAMILY PLANNING, MATERNAL & CHILD HEALTH AND REPRODUCTIVE HEALTH SERVICES



Management Information System (MIS) Services and Personnel (FP)
Directorate General of Family Planning
6 Kawran Bazar, Dhaka - 1215



Government of the People's Republic of Bangladesh
Management Information Systems (MIS)
Directorate General of Family Planning
6 Kawran Bazar, Dhaka-1215
www.dgfpbd.org

No. DGFP/MIS/2004/35/817

Date: 03.11.2014

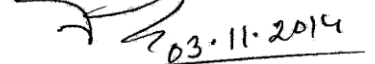
Secretary
Ministry of Health & Family Welfare
Bangladesh Secretariat, Dhaka.

Sub: Monthly Progress Report on Performance of Family Planning, MCH and Reproductive Health Services

Sir,

Progress Report on Performance of Family Planning, Maternal & Child Health and Reproductive Health Services for the month of August 2014 is submitted herewith for your kind information.

Yours obediently,



Md. Nur Hossain Talukder
Director General
Directorate General of Family Planning
Phone: 9118903

No. DGFP/MIS/2004/35/817/1 (210)

Date: 03.11.2014

Distribution (A):

1. Principal Secretary to the Honorable Prime Minister, Prime Minister's Office, Tejgaon, Dhaka.
2. Secretary, Finance Division, Ministry of Finance, Bangladesh Secretariat, Dhaka.
3. Secretary, Ministry of Planning, Planning Commission, Sher-e-Bangla Nagar, Dhaka.
4. Member, SEI Division, Planning Commission, Sher-e-Bangla Nagar, Dhaka.
5. P. S. to the Honorable Prime Minister, Prime Minister's Office, Tejgaon, Dhaka.
6. Additional Secretary, Ministry of Health & Family Welfare, Bangladesh Secretariat, Dhaka.
7. Divisional Commissioner, _____ Division.
8. Joint Secretary (FW & Programme), Ministry of Health and Family Welfare, Bangladesh Secretariat, Dhaka.
9. Joint Chief, Population Wing, Planning Commission, Sher-e-Bangla Nagar, Dhaka.
10. Joint Chief (Planning), Ministry of Health and Family Welfare, Bangladesh Secretariat (Clinic Building), Dhaka.
11. Joint Chief (Planning), Monitoring and Evaluation Unit, Ministry of Health and Family Welfare, Janashakhya Bhaban, Azimpur, Dhaka.
12. Deputy Commissioner, _____ District.
13. P. S. to the Honorable Minister, Ministry of Planning, Sher-e-Bangla Nagar, Dhaka for kind information of the Honorable Minister.
14. P. S. to the Honorable Minister, Ministry of Health & Family Welfare, Bangladesh Secretariat, Dhaka, for kind information of the Honorable Minister.
15. P. S. to the Honorable State Minister, Ministry of Health & Family Welfare, Bangladesh Secretariat, Dhaka, for kind information of the Honorable State Minister.
16. Deputy Secretary (Development), Statistics Wing, Planning Division, Ministry of Planning, Sher-e-Bangla Nagar, Dhaka.

Distribution (B):

17. Director General, Health Services, Mohakhali, Dhaka.
18. Director General, Medical Services, Ministry of Defense, Dhaka Cantonment, Dhaka.
19. Director General, NIPORT, Azimpur, Dhaka.
20. Director (Administration/Finance/Logistics & Supply/Planning/Audit), Directorate General of Family Planning, 6 Kawran Bazar, Dhaka-1215.
21. Director (MCH-S), Directorate General of Family Planning, 6 Kawran Bazar, Dhaka-1215.
22. Line Director (CCSDP), Directorate General of Family Planning, 6 Kawran Bazar, Dhaka-1215.
23. Director (IEM) with a request for taking necessary measures for publication of the report in the newspaper and other Media (Paper, Radio & T.Vs) 6 Kawran Bazar, Dhaka-1215.
24. Divisional Director, Family Planning, Dhaka/Chittagong/ Khulna/ Rajshahi/ Barisal/ Sylhet Division.

25. Superintendent, MCHTI, Azimpur, Dhaka/Director MFSTC-Mohammadpur, Dhaka.
26. Additional Director, Central Ware House, Family Planning, Mohakhali, Dhaka.
27. Deputy Director, Family Planning _____ District.
28. Librarian, Ministry of Health and Family Welfare, Bangladesh Secretariat, Dhaka.
29. P.A to Director General, Directorate General of Family Planning, 6 Kawran Bazar, Dhaka-1215.
30. Documentation Centre, IEM Unit, DGFP, 6 Kawran Bazar, Dhaka-1215.

Distribution (C):

1. Mr. Peter Herzig, Health Advisor and Chairperson, HNP Consortium, European Commission. House-7, Road – 84, Gulshan-2, Dhaka.
2. Task Team Leader, Health and Population Program Project, World Bank, E-32, Agargaon, Sher-e-Bangla Nagar, Dhaka-1207.
3. Chief, Population & Health, USAID (US Embassy), Madani Avenue, Gulshan-2, Dhaka.
4. Representative, UNFPA, IDB Bhaban, E/8 Begum Rokeya Sharani, Sher-e-Bangla Nagar, Dhaka-1207.
5. Representative, WHO, House No-12, Road No. 7, Dhanmondi R/A, Dhaka.
6. Representative, UNICEF, 1 No. Mintu Road, Extension Building (Hotel Sheraton), Dhaka
7. Representative, Population Council, House No. CES(B)-21, Road 118, Gulshan, Dhaka.
8. Director General, FPAB, 2, Naya Paltan, Dhaka.
9. Director, ICDDR'B, Mohakhali, Dhaka-1212
10. Executive Director, BAVS, 7/5, Main Road, Mirpur-2, Dhaka.
11. Managing Director, Social Marketing Company (SMC), SMC Tower (6th, 7th & 8th floor) 33, Banani C/A, Dhaka-1213.
12. Executive Director, PSTC, New Circular Road, Dhaka.
13. Country Director, SPS/MSH, House No. 28, Flat W2, Road No. 63, Gulshan-2, Dhaka-1212.
14. Country Representative, Engender Health, House No. 40 (New), Road No. 16(New)/27 (Old), Concord Royal Court (5th floor), Dhanmondi R/A, Dhaka.
15. Communication/Documentation Officer, Population Council, House # CES (B) 21, Road # 118, Gulshan, Dhaka

(Md. Zahir Uddin Babar)

Director (MIS)

&

Line Director (MIS-FP)

Phone: 9146262; Mail: dirmisfp@gmail.com

Table of Contents

Contents	Page No.
Summary of FP Performance.....	03
Summary of the MCH & RH Services	04
Introduction	05
Family Planning Performance (CAR related)	05
MCH Performance	05
Highlights August 2014	06
Table Analysis	07
Remarks	09
Clarification about some information.....	10
Highest and Lowest performing districts in clinical methods.....	10
Table: 01 National Projection, Performance and Achievement Rate of Contraceptive Methods	11
Table: 02 List of Divisions according to descending order of Achievement Rate against their projections of Clinical Methods for the period of July to August 2014.....	11
Table: 03 List of Districts achieved the highest Achievement Rate of Clinical Method against their projections for the period of July to August 2014.....	11
Table: 04 List of Districts achieved the lowest Achievement Rate of Clinical Methods against their projections for the period of July to August 2014.....	11
Table: 05 Comparative Statement of contraceptive performance for the period between July to August 2013 and July to August 2014	12
Table: 06 Performance & Distribution of Contraceptives by Method for the month of July and August 2014	12
Table: 07 Contribution of Government, NGOs and Multisector in respect of Contraceptive Performance during August 2014.....	12
Table: 08 NGO and Multisector wise Contraceptive Performance for the month of August 2014.....	13
Table: 09 District wise Projection, Performance and Achievement Rate of Permanent and Long Acting Methods	16
Table: 10 District wise Projection, Performance and Achievement Rate of Short Acting Methods.....	18
Table: 11 Old Users, New Users, Dropout and CAR by District at the end of August 2014.....	20
Table: 12 Number of New and Total Acceptors upto the end of July and August 2014.....	24
Table: 13 CAR(%) by Division upto the end of July and August 2014	24
Table: 14 District by Range of CAR upto the end of August 2014.....	25
Table: 15 List of Upazila achieved CAR 70% & above upto the end of August 2014	26
Table: 16 List of Upazila achieved CAR 60-69% & upto the end of August 2014	29
Table: 17 List of Upazila achieved CAR 0 to 59% upto the end of August 2014.....	29
Table: 18 Method wise Number of Dropout and Switch Over by Division upto the end of August 2014.....	30
Table: 19 Contraceptive Acceptors and Acceptance Rate by Division up to the end of July and August 2014	30
Table: 20 Status of Contraceptive Method-Mix based on CAR at the end of the Month of August 2014.....	30
Chart: Pie chart of Method-Mix for the month of August 2014.....	31
Table: 21 Performance by type of MCH services for the month of July and August 2014	32
Annex: A Summary of the Couples and Acceptors by Month since March 2014	33
Annex: B Performance of RH-EOC of MCWCs, MCHTI & MFSTC for the month of August 2014.....	35

**Summary of the FP Performance for the Month of
July & August 2014**

Indicators	July 2014	August 2014
Number of Total Eligible Couples (Excluding city corporations) :	26620035	26660205
Number of Total Acceptors (Excluding city corporations) :	20785679	20820316
CAR (Contraceptive Acceptance Rate) :	78.1	78.1
Method Specific acceptors (Cumulative) :		
Permanent Method (Male) :	791001	793828
Permanent Method (Female) :	2091541	2099415
Permanent Method (Total) :	2882542	2893243
IUD (Users) :	758404	757192
Implant (Users) :	795875	801846
Injectable (Users) :	4236098	4243952
Oral Pill (acceptors) :	10336408	10343880
Condom (acceptors) :	1776352	1780203
Method Specific new acceptors :		
Permanent Method (Male) :	3674	4986
Permanent Method (Female) :	7116	11283
Permanent Method (Total) :	10790	16269
IUD (Users) :	9207	10974
Implant (Users) :	12199	19388
Injectable (Users) :	68143	78187
Oral Pill (acceptors) :	123306	139538
Condom (acceptors) :	44771	48367
Number of Districts reported :	64	64
Number of Upazilas reported :	488	488
Range of CAR (%)	No. of Districts	
	July 2014	August 2014
00 – 59 :	0	0
60 – 69 :	0	0
70 & above :	64	64
Contraceptive Performance and distribution by methods (Absolute Performance) :		
Permanent Method (Male-cases) :	5618	8095
Permanent Method (Female-cases) :	5689	10696
Permanent Method (Total-cases) :	11307	18791
IUD (Nos.) :	11652	16699
Implant (Nos.) :	10080	25757
Injectable (Doses) :	1074843	1174466
Oral Pill (Cycles) :	8793616	8854425
Condom (Pieces) :	11761529	12314479

Summary of the MCH and Reproductive Health Services for the Month of July & August 2014

Services	July 2014	August 2014
Number of Pregnant Women (Registered by FWA)	830589	852262
Ref. High Risk Pregnant Mother	13019	12685
Antenatal Care		
1st visit	158444	188643
2nd visit	115792	125464
3rd or more visits(including MCHTI)	116408	128411
Delivery (conducted in MCHTI, MFSTC, MCWC, UHC, UH&FWC)	28876	30680
Caesarian operations (MCHTI, MCWC, FP & NGO Clinics)	4272	4934
Postnatal Care (MCHTI, MFSTC, MCWC, UHC, UH&FWC)	122406	131482
Referred Sterile Couple	8123	7605
Attacked by Anemia	111139	123113
Referred for Anemia	9732	10862
Attacked by Iodine Deficiency	11297	10647
Referred for Iodine Deficiency	4314	3727
Attacked by Dys-menorrhoea	38431	41902
Referred for Dys-menorrhoea	6210	6500
Attacked by RTI/STI (Boys)	44029	43761
Attacked by RTI/STI (Girls)	67124	72771
Referred for RTI/STI (Boys)	7830	10725
Referred for RTI/STI (Girls)	12249	10843
Treatment of RTI/STI (MCHTI & MCWCs only)	3115	3930
TT for Women (15 - 49 yrs)		
1st dose	114001	121190
2nd dose	113982	120080
3rd dose	110784	117868
4th dose	103872	110356
5th dose	99599	108186
Total TT	542238	577680
Immunization		
DPT 1st dose	151433	158391
DPT 2nd dose	152357	157598
DPT 3rd dose	152673	156664
BCG (Vaccine)	142691	150486
Measles (Vaccine)	177560	190106
Number of Children received services (including MCHTI & MFSTC)		
0-<1 yr.	252017	272755
1 – 5 yrs.	513509	559979
General Treatment	2625918	2863879
Number of ECP acceptors	786	545
Number of MR done (Both Govt. & NGOs)	14063	18238
Birth :		
Live Births (Home) by Trained Persons (collected by FWA)	58161	62962
Live Births (Home) by Non-trained Persons(collected by FWA)	14772	16807
Live Births (Clinics) (collected by FWA) *	33437	37374
Total Birth :	106370	117143
Still Births (including MCHTI)	240	320
Death :		
Neonatal deaths(0-28 days)	602	851
Infant Deaths (29 days-<1 yr.)	203	262
Child Deaths (1-<5 yrs.)	354	481
Maternal Deaths	73	78
Other Deaths	23364	23777
Total Death :	24596	25459

* Live births (Clinic) conducted at MCH, DH, MCWC, UHC, FWC, NGO & Private clinics.

SUMMARY

Introduction

Management Information System (MIS) has been operational under the Directorate General of Family Planning (DGFP) for a long time. Contraceptive Performance, MCH and Reproductive Health service's report are used to be published each month from MIS Unit on the basis of Service Statistics received from the field workers, service delivery clinics and NGOs. Erstwhile Family Welfare Register, however, is the principal source of performance statistics. This report is prepared on the basis of FWA Registers (7th generation). There is a reporting system to collect the information from the field. MIS Reporting Form No. 1 is filled up by the FWA and submitted the same to FPI. FPI fills up the MIS reporting Form-2 by compiling of all the FWAs (Form-1) report and submits to UFPO office. MIS reporting Form-3 (clinical) is filled up by MO (clinic)/ (MCH-FP)/ (FW)/ SACMO/ FWV and is submitted to UFPO office. NGOs of the respective area submit their report to UFPO office through MIS reporting Form-2 and 3 as their requirement. All the reporting Form-2 and 3 are compiled by UFPO office and filled up reporting Form-4 is submitted to District FP Office. District FP Office fills up the MIS reporting Form-5 by compiling of all the reporting Form-4 and is sent to Director (MIS), DGFP. It provides information of contraceptive use status of eligible couples and different types of MCH and Reproductive Health services. MIS performance report is primarily used by different level of program managers and supervisors engaged in implementing the Family Planning and MCH & RH program in the country. Besides, different policy makers, decision makers, donor agencies, Development Partners, researchers and other users also use this report.

Family Planning Performance (CAR related):

Performance reports of August'14 have been received from all the 64 districts of the country. During the month of August'14 total numbers of eligible couples were found to be 26660205 as against 26620035 couples in the previous month. Performances of NGOs are also included in the report as reported by the Upazila Offices. A total of 20820316 acceptors are reported in the month of August'14 as against 20785679 acceptors reported in July'14. The Contraceptive Acceptance Rate (CAR) achieved at the end of the reporting month for six modern methods (Permanent Method, IUD, Injectables, Oral Pill, Condom and Implant) is 78.1 which was the same 78.1 in July'14. Method Specific Acceptors (Cumulative), Method Specific New Acceptors and Contraceptive distribution by Methods are shown in the summary sheet.

It may be noted that the contraceptive acceptance rate is an estimate, based on the client contact and the status of contraceptive acceptance as reported by the field workers based on the entries made in the register. The Contraceptive Prevalence Rate (CPR), on the other hand, is based on periodic surveys that are made on precise statistical procedures. The acceptance rate is a tentative rate and varies from month to month because of reporting status and coverage. This rate is usually higher than the Contraceptive Prevalence Rate (CPR). CAR is generally used to monitor as a management tool on 'on-going' program performance in the country. It is not so much used to evaluate the programme impact or goals, which is done by periodical scientific surveys.

MCH Performance:

In the month of August'14, 852262 pregnant women have been registered. 12685 Pregnant Mother referred to hospital for their complications. Referred for treatment of adolescent boys and girls of RTI/STI

are found to be 10725 and 10843 respectively. 577680 Nos. of Mother TT Injections (total of 1st to 5th dose) were given to the women aged 15 to 49 years during August'14 but in the previous month (July'14) 542238 women were reported to have received TT shots. Dose wise DPT vaccines were shown in the summary sheet. BCG vaccines were given to 150486 infants and 190106 infants received Measles vaccines during August'14. Number of Child-care (0-5 yrs.) is 832734 during the month of August'14 as against 765526 in July'14. Visit wise Antenatal Care are also shown in the summary sheet both of July'14 and August'14. In the reporting month the number of Postnatal Care is 131482 and number of delivery conducted by the clinics is 30680. The number of Newborn babies delivered at home are reported to be 62962 by trained personnel and 16807 by non-trained personnel. A total number of 37374 Newborn babies were delivered at the clinics in August'14 (information collected by the field workers). Still Birth is recorded 320 in August'14 and in the previous month it was 240. Neonatal deaths (0-28 days) & Infant deaths (29 days-1yr.) are recorded to be 851 and 262 in the month of August'14 where its were 602 and 203 in July'14 respectively. A total of 481 child-deaths (1-5 yrs.) have been reported in the month of August'14 as against 354 in July'14. Maternal deaths were reported 78 during the month of August'14 which was 73 in July'14. 23777 Other deaths were reported to have occurred in August'14 but in July'14 the number of such deaths were reported to be 23364. General treatments were rendered to 2863879 and 2625918 patients in the month of August'14 and July'14 respectively. In August'14 Number of ECP acceptors are 545 but in July'14 it was 786 MR done in August'14 is 18238 but in July'14 it was 14063 Performance done by MCHTI, MFSTC & MCWCs is also included in the report.

Highlights August 2014

- a) National Contraceptive Acceptance Rate (CAR), based on 26660205 Couples visited, is found to be 78.1% percent. Rajshahi division had achieved the highest acceptance rate 80.4%, followed by Khulna division 79.8%. The CAR is found to be 77.6% CAR achieved in Dhaka division. The rate of Contraceptive Acceptance rate have been found to be rather low in Barisal 77.0, Sylhet 76.0%, and Chittagong 75.0% compared to other three divisions.
- b) The highest number of Acceptors 6152873 has been reported from Rajshahi division followed by 5894652 in Dhaka division, Chittagong divisions reported 3580597 acceptors respectively. Acceptors size is however, found much smaller in Khulna, Barisal, which are 2764882, 1242271 and in Sylhet division it is 1185041 because these are the smaller divisions than that of other four.
- c) Out of 64 reporting districts, all districts have reported acceptance rate of 70 percent and above, no district has reported CAR of 60 - 69 percent and no district have reported CAR of 0 – 59.
- d) Out of 488 Upazila 483 have reported CAR at the level 70% and above, 4 Upazilas have reported CAR level 60-69 percent and 1 Upazila has reported CAR level 0-59 percent.
- e) In case of performance done in the reporting month (Aug'14), Dhaka district recorded the highest Achievement Rate of 164.0, Rajshahi placed in 2nd position with 131.7 and Kishoreganj district has occupied the 3rd position with 103.3 of permanent method. Dhaka district has shown Achievement Rate 163.8 in IUD which is the first position among the other districts and Pabna has got the 2nd place with 94.2 in IUD. Joipurhat district has recorded the highest Achievement Rate 205.2 in Implant. Bhola district has recorded the highest Achievement Rate 182.1 in Injectable, Mymensingh district has recorded the highest Achievement Rate 93.5 in Oral Pill and Dhaka district has recorded the highest Achievement Rate 143.1 in Condom.
- f) SMC has reported distribution of 3166918 cycles of oral pill and 11780734 pieces of condom in August'14.

- g) Narsingdi MCWC have performed highest of 55 Caesarian Operations, Gaibandha MCWC has performed highest of 248 deliveries. MCHTI, Azimpur has performed 295 Caesarian Operations & 462 deliveries in the reporting month August'14. Naogaon, Joypurhat, Sirajganj, Lalmonirhat, Naryanganj, Jamalpur, Gopalganj, Magura, Meherpur, Kumarkhali (Kustia), Gournaadi (Barisal), Lalmohon (Bhola), Barguna, Pirujpur, Cox's Bazar, Bandarban, Noakhali, Begumganj (Noakhali), Pauchuria (Patiya) and Sylhet MCWCs have not done any Caesarian Operations. It may be due to the vacancies of trained EOC doctors in those centers or Extension Works. Director (MCH-S) & Line Director (MC&RH) should immediately look into the matter.

Table Analysis:

- Table 1:** Shows contraceptive performance in respect of Permanent, Long Acting and Short Acting methods for the reporting month (August'14) and the reporting period (Jul'14 to Aug'14) against their respective projections. In the reporting month the achievement rates of Permanent methods (Male) are 43.4%, Permanent methods (Female) 56.0% Permanent methods (Total) 49.8%, IUD 57.8%, Implant 87.8%, Injectables 77.9%, Oral Pill 63.4% and Condom 61.7. In the reporting period (Jul'14 to Aug'14) the achievement rates of Permanent methods (Male) is 36.7%, Permanent methods (Female) 42.9%, Permanent methods (Total) 39.9%, IUD 49.1%, Implant 61.1%, Injectables 74.6%, Oral Pill 63.2% and Condom 60.3%.
- Table 2:** Shows the divisions according to descending order of achievement rate against their projection of Permanent and Long Acting methods for the period Jul'14 to Aug'14.
- Table 3:** Showing the 3(three) districts achieved the highest achievement rate against Permanent and Long Acting methods of their projections for the period Jul'14 to Aug'14
- Table 4:** Shows the districts achieved the lowest achievement rate of Permanent and Long Acting methods against their projections for the period Jul'14 to Aug'14.
- Table 5:** Statement of contraceptive performance between the period Jul'13 to Aug'13 and Jul'14 to Aug'14. The Achievement Rate of Permanent Method (Male) was 43.8% in the period Jul'13 to Aug'13 but it shows the lower rate 36.7% in the current period. So it is 7.0% decrease than that of Jul'13 to Aug'13, Permanent Method (Female) was 45.4% in the period Jul'13 to Aug'13 but it shows the lower rate 42.9% in the current period So it is 2.5% decrease than that of Jul'13 to Aug'13. Permanent Method (Total) was 44.6% in the period Jul'13 to Aug'13 but it shows the lower rate 39.9% in the current period. So it is 4.8% decrease than that of Jul'13 to Aug'13. IUD achieved the 49.1% in the reporting period but in the Jul'13 to Aug'13 it achieved 55.2%. So in case of IUD 6.1% decreases in the reporting period. Implant achieved the 61.1% in the reporting period but in the Jul'13 to Aug'13 it shows 54.0%, in that case Implant has shown 7.1% increase in the reporting period. Injectable achieved the 74.6% in the current period but in the period July'13 to Aug'13 it shown 76.4%. Injectable has shown 1.8% decrease than that of Jul'13 to Aug'13. Oral Pill achieved the 63.2% in the present period but in the period Juyl'13 to Aug'13 it was 65.1%. Oral Pill decrease 2.0% than that of Jul'13 to Aug'13. In case of Condom it achieved 60.3% in the current period but in the Jul'13 to Aug'13 it shown 60.1%. It shows 0.3% increase than that of Jul'13 to Aug'13.
- Table 6:** Shows the status of Contraceptive Performance reported this reporting month for Clinical and Non-clinical Methods based on field worker's report. In comparison with that of previous month Permanent Method (male) 44.1%, Permanent Method (female) 88.0%, Overall Permanent Method (total) 66.2%, IUD 43.3%, Implant 155.5%, Injectable 9.3%, Oral Pill 0.7% and Condom 4.7% higher than that of July'14.
- Table 7:** Shows the share of Government and NGOs and Multisectors by methods in the overall National performance. Government sector has contributed 60.0 percent in Permanent Method (Male), 90.5 percent in Permanent Method (Female), 77.4 percent in Permanent Method (Total), 87.1 percent in IUD, 88.2 percent in Implant, 81.4 percent in Injectables, 85.3 percent in Oral Pill and 71.1 percent in Condom. On the other hand NGOs and Multisectors have

contributed 40.0 percent in Permanent Method (Male), 9.5 percent in Permanent Method (Female), 22.6 percent in Permanent Method (Total), in IUD 12.9 percent, in Implant 11.8 percent, in Injectables 18.6 percent, in Oral Pill 14.7 and in Condom 28.9 percent in the reporting month August'14.

Table 8: Division wise Contraceptive Performance by methods of NGOs and Multisectors (August'14) are shown in this table. Marie Stopes Clinic of Rajshahi division is in the highest position, BAVS of Dhaka division is in the next and Marie Stopes Clinic of Dhakai division is in the 3rd position in Permanent method. By NGOs and Multisectors performance of Total Permanent methods are 4249 in the reporting month, in which Males are 3237 and Females are 1012. Total IUD and Implant 2153 and 3051 are inserted in the reporting month August'14. Injectables 217890 vials, Oral Pill 1299769 cycles and 3559457 pieces of Condom are distributed by NGOs and Multisectors in this month.

Table 9: Shows the projection, performance and achievement rates of Permanent, and Long Acting methods in the reporting month August'14 and the reporting period Jul'14 to Aug'14. In reporting month Dhaka district has achieved the highest achievement rate of 164.0 percent and Rajshahi is the next highest with 131.7 percent in Permanent Method. Dhaka has achieved the highest achievement rate of 163.8 percent in IUD and Joipurhat achieved the highest achievement rate of 205.2 percent in Implant. And in the reporting period Jul'14 to Aug'14, Dhaka district has achieved the highest achievement rate of 149.6 percent and Rajshahi is the next highest with 112.4 percent in Permanent Method. Dhaka has achieved the highest achievement rate of 140.3 percent in IUD and Rangamati has achieved the highest achievement rate of 135.2 percent in Implant.

Table 10: Shows the projection, performance and achievement rates of Short Acting methods in the reporting month August'14 and the reporting period Jul'14 to Aug'14. In reporting month Bhola district has achieved the highest achievement rate of 182.1 percent and Cox's Bazar is the next highest with 132.3 percent in Injectables. Mymensingh district have achieved the highest achievement rate of 93.5 percent in Oral Pill. Dhaka district has achieved the highest achievement rate of 143.1 percent in Condom. In the reporting period Jul'14 to Aug'14 Bhola district has achieved the highest achievement rate of 179.5 percent and Meherpur is the next highest with 139.6 percent in Injectables. Mymensingh has achieved the highest achievement rate of 93.8 percent in Oral Pill and Dhaka has achieved the highest achievement rate of 134.6 percent in Condom.

Table 11: This table shows the Old acceptors, New acceptors and dropout (No method & switch over) cases by districts in the reporting month (August'14). This table is prepared on the basis of CAR report.

Table 12: Shows the new and total acceptors of the current month in comparison with that of the previous month. In case of total acceptors all the methods, Permanent Method(Male), Permanent Method (Female), Permanent Method (Total), Implant, Injectables, Oral Pill and Condom have shown increasing trend except IUD. In case of new acceptors all the methods Permanent Method (Male), Permanent Method (Female) and Permanent Method (Total), IUD, Implant, Injectables, Oral Pill and Condom have shown increasing trend. New acceptors are shown depending on the field workers report which collects from their visiting areas.

Table 13: This table shows that among the divisions. Rajshahi had recorded the highest CAR of 80.4%, next Khulna division 79.8%, Dhaka division 77.6%, Barisal division 77.0%, Sylhet division 76.0%, and Chittagong division 75.0% in the reporting month August'14.

A Bar Graph is showing the division wise CAR for the current month.

A Bar Graph is showing the division wise CAR for the current month in comparison with that of previous month.

Table 14: Shows that 64 districts have achieved CAR level of 70 percent and above where no districts

have achieved CAR between 60-69 percent and no districts have achieved CAR between 0-59 percent in the reporting month August' 14.

A bar graph is also showing the same in comparison with previous month.

Table 15: List of 483 Upazilas among the 488, which have achieved CAR 70.0% and above in the reporting month.

Table 16: List of 4Upazilas which have achieved 60-69% CAR in the reporting month.
1 Upazila has achieved 0-59% CAR in the reporting month.

Table 17: Graph shows that out of 488 Upazilas 483 achieved CAR level 70% and above, 4 Upazilas achieved CAR level 60-69 percent and 1 Upazila that achieved CAR level 0-59 percent in the current month. There are also showing graphical presentation both of July' 14 and August' 14.

Table 18: Shows the number of dropouts and switch over by method and by division for the month of August' 14.

Table 19: This table shows the Division-wise comparison of Couples, Contraceptive Acceptors and the Acceptance Rate up to the end of July and August 2014. In the reporting month the highest number of Eligible Couples have been reported from Rajshahi division, which is 7648853, 2nd highest is Dhaka division, which is 7598376, then Chittagong, Khulna, Barisal and Sylhet division, which are 4777126, 3462709, 1614061 and 1559080 respectively. In case of acceptors Rajshahi division has been reported the highest number, which is 6152873 followed by Dhaka division 5894652, Chittagong division 3580597, Khulna division 2764882 Barisal divisions 1242271 and Sylhet division 1185041.

Table 20: Shows the contraceptive method mix by division for the month of August'14. Khulna division has contributed the highest rate in Permanent Method 16.1% among its CAR method mix followed by Rajshahi 15.8% then Sylhet 15.5% and Dhaka 12.7%. Sylhet division has recorded 5.4% in IUD which is highest among the other divisions followed by Chittagong 4.6% and Barisal 4.1%. Barisal division has contributed the highest rate in Implant 5.4%, followed by Dhaka and Khulna division with 3.9, Barisal division has also contributed the highest rate in Injactable 28.8% then Chittagong 23.2% and then Khulna 20.8% in CAR method mix among all the divisions. Dhaka division has recorded the highest rate in Oral Pill 52.7% followed by Rajshahi 50.1%, Chittagong 48.3%. Sylhet division has recorded the highest rate in Condom 10.7% followed by remaining 3 divisions Dhaka, Khulna and Chittagong which are 9.4%, 9.2% and 8.9% respectively.

Pie Charts are showing the division wise Method-Mix for current month.

Table 21: This table shows the performance of MCH and Reproductive Health Services during the month of July' 14 and August' 14.

Annex A: Annex A shows comparative summary key performances since March 2014.

Annex B: Performance of RH-EOC of MCWC including MCHTI & MFSTC for the month of August' 14.

Remarks

- **The achievement of Dhaka division is good against their projection in permanent method in the reporting month August'14 in comparison with that of other divisions.**

Clarification about the information of summary sheet, table-2 and table-3:

Method Specific Acceptors:

In the summary sheet, Method Specific Acceptors is shown based on the field workers (FWA) visit of the reporting month and also the previous month. These are the cumulative figure which includes previous month's acceptors and reporting month's new acceptors collected by the field workers within their working areas.

Contraceptive distribution by Method:

In the summary sheet, Contraceptive Performance by Method is prepared based on the performance and distribution of the reporting month. These figures are actual performance of the reporting month which is not comparable with the information written in method specific acceptors.

Table- 9, Table-10 and Table-11

Performance showing in the table-9 and 10 is the actual performance of the respective month but the new acceptors showing in the table-11 is may not be the performance done in the same month. It may happen that the new acceptor accepted method in the previous month but field worker shown that case in the next month due to their rounding schedule. So the performance of table-9, table-10 will not be the comparable with the new acceptor of table-11.

Clarification about the information of MCH and Reproductive Health Services:

- Information shown against 'delivery' which done in MCHTI, MFSTC, MCWCs, UHCs & UH&FWCs. This report is collected through the MIS reporting Form-3. So it is not the whole country's delivery records. This report is absolutely excluding the city corporations.
- Information shown against the 'live births (home)' based on field workers (FWA) report. Live births (clinic) are conducted at different types of clinic (MCH, DH, MCWCs, UHC, UH&FWC, NGO & Private clinics). Field workers visit their units monthly and they submit their report in every month.

Highest and Lowest performing districts in clinical methods

Highest performing districts in the month of August 2014

Permanent Method		IUD		Implant		Remarks
Districts	Ach. Rate	Districts	Ach. Rate	Districts	Ach. Rate	
Dhaka	164.0	Dhaka	163.8	Joipurhat	205.2	
Rajshahi	131.7	Pabna	94.2	Lalmonirhat	181.3	
Kishoreganj	103.3	Chittagong	90.4	Rangamati	164.8	

Lowest performing districts in the month of August 2014

Permanent Method		IUD		Implant		Remarks
District	Ach. Rate	District	Ach. Rate	District	Ach. Rate	
Sirajganj	10.3	Nawabganj	16.8	Sirajganj	12.7	
Sherpur	16.1	Kushtia	17.5	Nawabganj	13.8	
Cox's Bazar	16.5	Kurigram	20.9	Munshiganj	27.3	

Congratulations:

We congratulate the districts for their better performance in clinical methods against projections. We hope the officers and staffs are involved with the activities will continue their better performance in future.

Unsatisfactory Performance:

We are sorry for their unsatisfactory low performance in clinical methods against projections. We hope the officers and staffs are involved with the activities will try to overcome from this type of unsatisfactory performance in future.

Table :1**National Projection, Performance and Achievement Rate of Contraceptive Methods**

Methods	Yearly Projection	Reporting Month		Jul'14 to Aug'14	
		Performance (in CYP)	Achi. Rate (%)	Performance (in CYP)	Achi. Rate(%)
Permanent Method (Male)	223954	8095	43.4	13713	36.7
Permanent Method (Female)	229213	10696	56.0	16385	42.9
Permanent Method (Total)	453167	18791	49.8	30098	39.9
IUD	346449	16699	57.8	28351	49.1
Implant	351923	25757	87.8	35837	61.1
Injectables	4521808	293617	77.9	562327	74.6
Oral Pill	11171525	590295	63.4	1176536	63.2
Condom	1595932	82097	61.7	160507	60.3

Table :2**List of Divisions according to descending order of Achievement Rate against their projections of Clinical Methods for the period of July to August 2014**

Sl. No.	Permanent Method (Cases)				IUD (Cases)				Implant (Cases)			
	Division	Yearly Projection	Performance	Achi. Rate (%)	Division	Yearly Projection	Performance	Achi. Rate (%)	Division	Yearly Projection	Performance	Achi. Rate (%)
1.	Dhaka	132039	11092	50.4	Dhaka	96859	9656	59.8	Khulna	42984	4908	68.5
2.	Sylhet	29450	2083	42.4	Sylhet	20155	1727	51.4	Dhaka	92940	10561	68.2
3.	Rajshahi	123598	8526	41.4	Chittagong	63504	5365	50.7	Rajshahi	106711	12065	67.8
4.	Khulna	53289	3276	36.9	Barisal	23366	1954	50.2	Barisal	24183	2393	59.4
5.	Chittagong	80902	3666	27.2	Khulna	42685	3143	44.2	Sylhet	24232	1839	45.5
6.	Barisal	33889	1455	25.8	Rajshahi	99880	6506	39.1	Chittagong	60873	4071	40.1

Table :3**List of Districts achieved the highest Achievement Rate of Clinical Method against their projections for the period of July to August 2014**

Sl. No.	Permanent Method (Cases)				IUD (Cases)				Implant (Cases)			
	District	Yearly Projection	Performance	Achi. Rate (%)	District	Yearly Projection	Performance	Achi. Rate (%)	District	Yearly Projection	Performance	Achi. Rate (%)
1.	Dhaka	13799	3441	149.6	Dhaka	9046	2115	140.3	Rangamati	1354	305	135.2
2.	Rajshahi	8000	1499	112.4	Pabna	7048	976	83.1	Lalmonirhat	5565	1097	118.3
3.	Khulna	6950	895	77.3	Kishoreganj	6118	781	76.6	Joipurhat	3000	583	116.6

Table :4**List of Districts achieved the lowest Achievement Rate of Clinical Methods against their projections for the period of July to August 2014**

Sl. No.	Permanent Method (Cases)				IUD (Cases)				Implant (Cases)			
	District	Yearly Projection	Performance	Achi. Rate (%)	District	Yearly Projection	Performance	Achi. Rate (%)	District	Yearly Projection	Performance	Achi. Rate (%)
1.	Serajganj	14500	206	8.5	Kushtia	6500	147	13.6	Nawabganj	6000	71	7.1
2.	Cox's Bazar	5893	109	11.1	Nawabganj	5000	125	15.0	Serajganj	11634	150	7.7
3.	Madaripur	5000	107	12.8	Kurigram	8000	237	17.8	Munshiganj	4224	108	15.3

Table :5**Comparative Statement of contraceptive performance for the period between July to August 2013 and July to August 2014**

Methods	Yearly Projection (2013-2014)	Jul'13 to Aug'13		Yearly Projection (2014-2015)	Jul'14 to Aug'14		Change of Jul'14 to Aug'14 over Jul'13 to Aug'13
		Performance (in CYP)	Achi. Rate (%)		Performance (in CYP)	Achi. Rate (%)	
Permanent Method (Male)	226158	16504	43.8	223954	13713	36.7	-7.0
Permanent Method (Female)	237631	17976	45.4	229213	16385	42.9	-2.5
Permanent Method (Total)	463789	34480	44.6	453167	30098	39.9	-4.8
IUD	350000	32229	55.2	346449	28351	49.1	-6.1
Implant	350000	31497	54.0	351923	35837	61.1	7.1
Injectables	4452958.8	566871	76.4	4521807.7	562327	74.6	-1.8
Oral Pill	11001428	1194534	65.1	11171525	1176536	63.2	-2.0
Condom	1571632.5	157389	60.1	1595932.1	160507	60.3	0.3

Table :6**Performance & Distribution of Contraceptives by Method for the month of July and August 2014**

Method	Performance		% Change of Aug'14 over Jul'14
	Jul'14	Aug'14	
Permanent Method (Male, Cases)	5618	8095	44.1
Permanent Method (Female, Cases)	5689	10696	88.0
Permanent Method (Total, Cases)	11307	18791	66.2
I U D (Cases)	11652	16699	43.3
Implant (Cases)	10080	25757	155.5
Injectables (Doses)	1074843	1174466	9.3
Oral Pill (Cycles)	8793616	8854425	0.7
Condom (Pieces)	11761529	12314479	4.7

Table :7**Contribution of Government, NGOs and Multisector in respect of Contraceptive Performance during August 2014**

Method	Performance			Share of Contribution in Percentage	
	Govt.	NGOs & Multisector	Total	Government	NGOs and Multisector
Permanent Method (Male, Cases)	4858	3237	8095	60.0	40.0
Permanent Method (Female, Cases)	9684	1012	10696	90.5	9.5
Permanent Method (Cases)	14542	4249	18791	77.4	22.6
IUD (Cases)	14546	2153	16699	87.1	12.9
Implant (Cases)	22706	3051	25757	88.2	11.8
Injectable (Doses)	956576	217890	1174466	81.4	18.6
Oral Pill (Cycles)	7554656	1299769	8854425	85.3	14.7
Condom (Pieces)	8755022	3559457	12314479	71.1	28.9

Table :8**NGO and Multisector wise Contraceptive Performance for the month of August 2014**

Sl. No.	NGO and Multisector	Oral Pill (Cycle)	Condom (Pieces)	Injectable (Vial)	IUD (Cases)	Implant (Nos)	ECP (Dose)	Permanent Method		
								Male	Female	Total
1	Family Planning Association of Bangladesh (FPAB)	68147	148747	5470	72	475	37	211	93	304
2	BAVS	244	4572	100	1	40	0	123	73	196
3	Marie Stopes Clinic	7330	56736	5132	122	184	0	532	67	599
4	Palli Shisu Foundation (PSF)	72164	151892	12827	86	88	0	9	9	18
5	Jatio Tarun Shanga	23367	46764	2451	12	7	0	2	12	14
6	Bamaneh	26816	56793	2906	5	31	0	3	8	11
7	Tilottoma	15914	97400	5366	29	19	0	5	12	17
8	Anonnya Somaj Kallyan Samity	2980	2700	1100	0	0	0	0	0	0
9	Shanirvar Bangladesh	12454	12624	899	8	33	0	0	2	2
10	Sromo Kallyan Shangstha	36	96	0	0	0	0	0	0	0
11	CMH	1232	16010	181	0	0	0	0	2	2
12	BWHC	102	240	78	0	0	0	0	0	0
13	B.G.B	185	2336	2	0	0	0	0	0	0
14	R. H. Steps	1222	7236	836	29	0	0	0	0	0
15	MR CLINIC	357	30	36	0	0	0	0	0	0
16	POLLI SHISHU CLINIC	8149	9138	1541	3	0	0	3	5	8
17	JTS-GONO UNNAYAN ACADEMY	27238	82238	4514	22	21	0	2	7	9
18	THANGAMARA	447	2144	250	1	7	0	0	8	8
19	MOHILA-O-SHISHU SHASTHA KALLYAN SAMITY	1560	980	1080	0	0	0	0	0	0
20	LUTHAREN MISSION	758	588	41	0	13	0	1	0	1
21	Darpon	3045	3175	981	3	0	0	0	0	0
22	l pas	0	25	4	0	0	0	0	0	0
23	Surjer Hasi Clinic	23712	49097	6622	12	46	0	29	12	41
24	Friend Ship	315	1880	87	0	0	0	0	0	0
25	Kanchan	29141	48139	4093	5	11	0	6	12	18
26	Population Services & Training Centre (PSTC)	701	13252	724	0	2	0	0	7	7
27	KMSS	1449	12243	711	0	0	0	0	0	0
28	SORNALY	2847	2977	1028	3	0	0	0	0	0
29	Manab Bikash Sangstha	360	480	57	0	0	0	0	0	0
30	Dhaldanga Bohumukhi Samaj Unnayn Sangstha	5570	6100	400	0	0	0	16	11	27
31	Chardulai	2954	6494	596	10	0	0	0	0	0
32	Lamb Hospital	57	0	96	0	56	0	1	14	15
	Rajshahi Division	340853	843126	60209	423	1033	37	943	354	1297
1	Family Planning Association of Bangladesh (FPAB)	38087	69498	935	21	145	0	19	21	40
2	BAVS	759	2088	316	0	18	0	218	3	221
3	Marie Stopes Clinic	2667	25328	1890	111	20	0	3	6	9
4	Paribarik Shastha Clinic	3405	2736	409	8	0	0	0	0	0
5	Jatio Tarun Shanga	16459	37314	3007	6	15	0	0	17	17
6	Paribar Kallyan Shangstha (PKS)	42474	177672	11853	22	62	0	6	38	44
7	PSKS	1083	12876	679	5	3	0	0	2	2
8	Sromo Kallyan Shangstha	1290	5580	0	0	0	0	0	0	0
9	Addin Hospital	7430	8420	2038	0	2	0	0	12	12
10	PSKP	2385	11550	947	6	19	0	0	1	1
11	CMH	90	1500	4	0	0	0	0	0	0
12	BONOPHUL (PKS)	2646	6510	802	12	11	0	0	4	4
13	B.G.B	201	1196	4	0	0	0	0	0	0
14	R. H. Steps	1392	3372	399	2	0	0	0	0	0
15	VPKA (VP KENDRA)	2693	21080	1192	2	0	0	0	5	5
16	CRC	18058	13800	1155	9	1	0	0	0	0
17	FAIR FOUNDATION	2901	11160	1308	8	0	0	0	0	0
18	SGS	6264	11425	859	1	3	0	0	1	1
19	Police Hospital	63	2510	50	0	0	0	0	0	0
20	Surjer Hasi Clinic	2222	11124	642	1	3	0	0	4	4
21	MANOB SHEBA	300	730	0	0	0	0	0	0	0
22	THE SALVATION ARMY	460	590	104	0	0	0	0	1	1
23	Peoples Development Community (PDC)	8600	6500	500	0	0	0	0	0	0
	Khulna Division	161929	444559	29093	214	302	0	246	115	361

Sl. No.	NGO and Multisector	Oral Pill (Cycle)	Condom (Pieces)	Injectable (Vial)	IUD (Cases)	Implant (Nos)	ECP (Dose)	Permanent Method		
								Male	Female	Total
1	Family Planning Association of Bangladesh (FPAB)	13189	19016	796	8	79	4	21	11	32
2	BAVS	114	7488	55	5	7	0	208	2	210
3	Marie Stopes Clinic	975	6054	468	29	3	0	24	0	24
4	Paribarik Shastha Clinic	1094	2788	779	18	20	0	0	0	0
5	Shanirvar Bangladesh	23171	65174	8778	29	0	0	0	0	0
6	Sromo Kallyan Shangstha	84	0	0	0	0	0	0	0	0
7	TDH CLINIC	8540	2200	0	0	15	0	0	0	0
8	R. H. Steps	339	420	37	0	0	0	0	0	0
9	CHCP	1158	1056	0	0	0	0	0	0	0
10	DAK-DIAJAI	461	384	55	0	0	0	0	0	0
11	Surjer Hasi Clinic	1634	5900	855	28	31	0	0	2	2
12	UPHCP	1646	6240	851	1	2	0	2	4	6
	Barisal Division	52405	116720	12674	118	157	4	255	19	274
1	Family Planning Association of Bangladesh (FPAB)	62957	125046	2141	39	135	4	116	16	132
2	BAVS	117	15322	62	5	32	0	589	5	594
3	Marie Stopes Clinic	10367	89618	4163	370	82	3	535	22	557
4	Paribarik Shastha Clinic	1557	14879	981	5	2	0	2	2	4
5	Jatio Tarun Shanga	22728	77542	3437	33	68	0	9	3	12
6	Bamaneh	13677	57535	1965	5	17	0	2	3	5
7	Paribar Kallyan Shangstha (PKS)	995	6600	171	0	0	0	0	0	0
8	Shanirvar Bangladesh	195050	394920	17531	216	121	0	22	44	66
9	Sromo Kallyan Shangstha	283	2760	0	0	0	0	0	0	0
10	Addin Hospital	638	1250	257	1	5	0	0	37	37
11	BAPSA	876	7626	408	23	40	0	141	6	147
12	Radda Barnen	443	7168	605	3	0	0	0	0	0
13	UTPS	4188	15357	783	24	69	0	12	6	18
14	PSKP	1997	10516	480	0	4	0	0	0	0
15	Community Health Care Project	678	1976	131	0	0	0	0	0	0
16	Gono Shastha Kendra	6113	2815	185	0	0	0	0	0	0
17	Anirban Sangsad	999	2580	105	0	0	0	0	0	0
18	ICDDR,B	93	240	14	0	0	0	0	0	0
19	CMH	776	10000	39	0	0	0	0	0	0
20	SPIRE	4200	6000	618	0	0	0	0	0	0
21	Shimantik	576	2100	140	3	0	0	4	6	10
22	Nagar Unnoyan Somaj Seba Shangstha	6120	7632	586	0	0	0	0	0	0
23	TDH CLINIC	1440	3200	86	0	9	0	1	2	3
24	SHAKTTI FOUNDATION	370	6550	56	0	0	0	0	0	0
25	BWHC	300	2102	260	2	0	0	0	0	0
26	B.G.B	37	1145	2	0	0	0	0	0	0
27	Association in Training & Management (AITAM)	87	974	98	1	0	0	10	0	10
28	MANOBK SHAHAJJYA SAMITY	60	150	25	0	0	0	0	0	0
29	R. H. Steps	2069	7134	711	15	0	0	0	2	2
30	WORLD CONCERN	1005	3516	610	0	0	0	0	0	0
31	VPKA (VP KENDRA)	11692	59190	2966	7	36	0	2	5	7
32	MMKS	324	1440	150	0	0	0	0	0	0
33	CHCP	8635	10524	18	1	11	0	0	4	4
34	VFWA	1878	11022	1931	11	3	0	0	4	4
35	NARI MOTRY	3505	500	1009	6	22	0	5	10	15
36	SGS	19571	35788	1629	13	3	0	0	4	4
37	CWFD	5094	25279	2059	12	7	0	0	2	2
38	Aid For Poor People	5493	13032	675	0	0	0	0	0	0
39	Surjer Hasi Clinic	43529	125521	7207	57	23	0	3	15	18
40	Provti S K S Prishad	4119	10073	595	0	0	0	0	0	0
41	KUMUDINI HOSPATIL	57	220	14	0	0	0	3	11	14
42	HRDS	339	1847	126	0	0	0	0	0	0
43	Family Welfare Assosiation	4287	3320	615	0	0	0	0	0	0
44	Population Services & Training Centre (PSTC)	38960	94332	4255	91	144	0	0	28	28
45	Faith & Hope	3363	13610	705	0	0	0	0	0	0
46	Jonoseba M&C W Songstha	3999	14448	597	10	0	0	0	0	0
47	KMSS	500	3215	335	0	2	0	0	0	0
48	Shastha Prokalpo	12	0	135	0	0	0	0	16	16

Sl. No.	NGO and Multisector	Oral Pill (Cycle)	Condom (Pieces)	Injectable (Vial)	IUD (Cases)	Implant (Nos)	ECP (Dose)	Permanent Method		
								Male	Female	Total
49	SAZEDA	79	852	39	0	0	0	0	0	0
50	Ma-O-Shisu Unnoyan Shangstha	6429	16200	795	0	0	0	0	0	0
51	Adarsha Paribar Kalyan Shangsta	912	3690	314	0	0	0	0	0	0
52	khulna Mukti Sena	3764	16144	564	9	5	0	0	0	0
53	Sebika Shangsta	3600	11540	385	27	0	0	0	0	0
54	Rural Health Development Organization(RHDO)	69	540	12	0	0	0	0	0	0
55	Daridra Paribar Seba Songshta	7929	23100	1153	0	0	0	0	0	0
56	M S F Belajayam	64	2330	188	0	0	0	0	0	0
57	Ucchatar Samaj Unnayan Songtha	651	7464	600	0	0	0	0	0	0
58	Aminance	20	169	4	0	0	0	0	0	0
59	Urban Health Care	2315	13419	252	9	5	0	0	5	5
60	Udoy	800	1500	0	0	2	0	0	0	0
	Dhaka Division	522785	1404562	65977	998	847	7	1456	258	1714
1	Family Planning Association of Bangladesh (FPAB)	37041	88814	2828	42	223	5	34	11	45
2	BAVS	222	7758	28	0	18	0	93	0	93
3	Marie Stopes Clinic	4549	26042	2023	130	20	0	97	28	125
4	Paribarik Shastha Clinic	1734	3612	470	2	0	0	0	0	0
5	Bamaneh	5563	56546	1419	7	1	0	4	3	7
6	Shanirvar Bangladesh	17159	55730	2745	17	1	0	0	1	1
7	BAPSA	1242	2856	245	2	0	0	0	0	0
8	ICDDR,B	1200	3000	1544	0	0	0	0	0	0
9	FDSR	42897	52870	8356	5	45	0	0	3	3
10	CMH	81	0	18	0	0	0	0	4	4
11	SUPIRAT	12504	82968	5101	16	1	0	0	0	0
12	PROSHANTI	1578	17234	1028	2	0	0	0	0	0
13	BONOPHUL (PKS)	90	720	89	0	0	0	0	0	0
14	NISKRITY	6060	22610	4545	6	15	0	0	0	0
15	IMAGE	2782	26480	2117	3	16	0	0	3	3
16	MOMOTA	2291	14898	1490	4	66	0	0	49	49
17	SUS (TMA , NASIRABAD)	17651	49002	1803	3	0	0	0	0	0
18	B.G.B	101	2760	4	0	0	0	0	0	0
19	R. H. Steps	2415	3344	751	30	1	0	0	0	0
20	BANDHAN	18057	70620	2787	19	1	0	0	1	1
21	33 Podatik	1205	18000	46	0	0	0	0	5	5
22	Ghasful	780	3000	85	2	0	0	0	0	0
23	Surjer Hasi Clinic	6927	39822	2298	14	6	0	1	0	1
24	RTMI	594	3192	420	0	2	0	1	1	2
25	SURJER HASHI CLINIC	2349	7368	997	13	0	0	0	0	0
26	NAGAR MATRI SADAN	111	516	33	3	18	0	17	5	22
27	NAGAR SASTHO KENDRO	776	1060	520	10	46	0	0	0	0
	Chittagong Division	187959	660822	43790	330	480	5	247	114	361
1	Family Planning Association of Bangladesh (FPAB)	8169	17940	213	0	105	0	9	17	26
2	BAVS	28	1008	27	0	17	0	28	31	59
3	Marie Stopes Clinic	1299	13296	302	19	12	0	43	62	105
4	CMH	1488	5120	64	0	0	0	0	0	0
5	Shimantik	17937	39480	3228	40	96	0	10	40	50
6	BWHC	152	2124	32	0	0	0	0	0	0
7	RED CRESCENT SANGSTHA	136	364	30	0	0	0	0	0	0
8	B.G.B	78	1315	0	0	0	0	0	0	0
9	R. H. Steps	414	216	56	3	0	0	0	0	0
10	Sylhet Samaj Kallyan Sangatha	1901	4144	1599	1	2	0	0	2	2
11	Surjer Hasi Clinic	624	1865	346	5	0	0	0	0	0
12	SUPPS	1597	2796	250	2	0	0	0	0	0
13	TIL Welfare Division	15	0	0	0	0	0	0	0	0
	Sylhet Division	33838	89668	6147	70	232	0	90	152	242
	Total NGOand Multisectoral Performance	1299769	3559457	217890	2153	3051	53	3237	1012	4249

Table :9**District wise Projection, Performance and Achievement Rate of Permanent and Long Acting Methods**

District	Permanent Method (Cases)					IUD (Cases)					Implant (Cases)				
	Yearly Projection	Reporting Month		Jul'14 to Aug'14		Yearly Projection	Reporting Month		Jul'14 to Aug'14		Yearly Projection	Reporting Month		Jul'14 to Aug'14	
		Perform.	Achi. Rate(%)	Perform.	Achi. Rate(%)		Perform.	Achi. Rate(%)	Perform.	Achi. Rate(%)		Perform.	Achi. Rate(%)	Perform.	Achi. Rate(%)
Dinajpur	10800	598	66.4	881	48.9	8000	374	56.1	663	49.7	8517	816	115.0	1226	86.4
Thakurgaon	3403	102	36.0	156	27.5	5183	109	25.2	228	26.4	3978	127	38.3	179	27.0
Panchgarh	4232	224	63.5	258	36.6	2979	137	55.2	261	52.6	2446	320	157.0	381	93.5
Nilphamari	5153	209	48.7	297	34.6	7419	211	34.1	372	30.1	7273	501	82.7	672	55.4
Rangpur	8987	582	77.7	983	65.6	6975	295	50.8	445	38.3	7100	829	140.1	1171	99.0
Kurigram	10500	374	42.7	641	36.6	8000	139	20.9	237	17.8	6500	449	82.9	760	70.2
Gaibandha	8600	364	50.8	622	43.4	6993	467	80.1	786	67.4	8000	1006	150.9	1503	112.7
Lalmonirhat	5660	120	25.4	190	20.1	4500	104	27.7	170	22.7	5565	841	181.3	1097	118.3
Bogra	13600	370	32.6	617	27.2	8137	294	43.4	457	33.7	10698	991	111.2	1423	79.8
Joipurhat	2878	242	100.9	360	75.1	3100	77	29.8	132	25.5	3000	513	205.2	583	116.6
Noagaon	8785	349	47.7	471	32.2	6500	213	39.3	362	33.4	6500	567	104.7	691	63.8
Nawabganj	5300	273	61.8	403	45.6	5000	70	16.8	125	15.0	6000	69	13.8	71	7.1
Rajshahi	8000	878	131.7	1499	112.4	7000	239	41.0	404	34.6	6500	610	112.6	960	88.6
Natore	6000	284	56.8	449	44.9	5500	183	39.9	316	34.5	5500	493	107.6	636	69.4
Pabna	7200	287	47.8	493	41.1	7048	553	94.2	976	83.1	7500	434	69.4	562	45.0
Serajganj	14500	124	10.3	206	8.5	7546	338	53.8	572	45.5	11634	123	12.7	150	7.7
Rajshahi Div.	123598	5380	52.2	8526	41.4	99880	3803	45.7	6506	39.1	106711	8689	97.7	12065	67.8
Kushtia	5800	153	31.7	219	22.7	6500	95	17.5	147	13.6	4237	280	79.3	351	49.7
Meherpur	3500	95	32.6	176	30.2	2300	47	24.5	81	21.1	2100	87	49.7	91	26.0
Chuadanga	6500	189	34.9	316	29.2	3000	115	46.0	199	39.8	3500	276	94.6	346	59.3
Jhenaidaha	4400	135	36.8	206	28.1	5000	222	53.3	413	49.6	4870	424	104.5	545	67.1
Magura	5500	96	20.9	210	22.9	2285	106	55.7	196	51.5	3000	287	114.8	464	92.8
Narail	4500	84	22.4	136	18.1	2500	91	43.7	175	42.0	3000	75	30.0	127	25.4
Jessore	7000	311	53.3	530	45.4	7200	395	65.8	653	54.4	8400	585	83.6	855	61.1
Khulna	6950	436	75.3	895	77.3	5800	332	68.7	669	69.2	5547	683	147.8	1027	111.1
Bagerhat	3337	135	48.5	252	45.3	3100	169	65.4	311	60.2	3330	247	89.0	400	72.1
Satkhira	5802	188	38.9	336	34.7	5000	158	37.9	299	35.9	5000	463	111.1	702	84.2
Khulna Div.	53289	1822	41.0	3276	36.9	42685	1730	48.6	3143	44.2	42984	3407	95.1	4908	68.5
Barguna	3882	105	32.5	184	28.4	3095	154	59.7	255	49.4	3500	297	101.8	444	76.1
Patuakhali	7300	152	25.0	272	22.4	4000	141	42.3	227	34.1	5625	361	77.0	480	51.2
Barisal	7700	256	39.9	455	35.5	6200	397	76.8	696	67.4	5858	353	72.3	577	59.1
Jhalakati	1993	69	41.5	117	35.2	1700	82	57.9	161	56.8	1700	113	79.8	167	58.9
Bhola	8200	208	30.4	259	19.0	5071	135	31.9	233	27.6	5000	255	61.2	343	41.2
Pirojpur	4814	92	22.9	168	20.9	3300	202	73.5	382	69.5	2500	227	109.0	382	91.7
Barisal Div.	33889	882	31.2	1455	25.8	23366	1111	57.1	1954	50.2	24183	1606	79.7	2393	59.4

District	Permanent Method (Cases)					IUD (Cases)					Implant (Cases)				
	Yearly Projection	Reporting Month		Jul'14 to Aug'14		Yearly Projection	Reporting Month		Jul'14 to Aug'14		Yearly Projection	Reporting Month		Jul'14 to Aug'14	
		Perform.	Achi. Rate(%)	Perform.	Achi. Rate(%)		Perform.	Achi. Rate(%)	Perform.	Achi. Rate(%)		Perform.	Achi. Rate(%)	Perform.	Achi. Rate(%)
Gopalganj	5281	336	76.3	615	69.9	3032	135	53.4	245	48.5	3516	214	73.0	346	59.0
Madaripur	5000	81	19.4	107	12.8	3500	119	40.8	230	39.4	4500	406	108.3	470	62.7
Shariatpur	4500	137	36.5	196	26.1	4800	239	59.8	445	55.6	3980	165	49.7	213	32.1
Faridpur	7100	239	40.4	450	38.0	5000	298	71.5	549	65.9	5000	354	85.0	677	81.2
Rajbari	4096	153	44.8	258	37.8	2983	167	67.2	289	58.1	4000	305	91.5	511	76.7
Dhaka	13799	1886	164.0	3441	149.6	9046	1235	163.8	2115	140.3	8651	1007	139.7	1525	105.8
Gazipur	8500	352	49.7	646	45.6	6500	442	81.6	758	70.0	6098	343	67.5	389	38.3
Munshiganj	6826	155	27.2	212	18.6	4998	140	33.6	229	27.5	4224	96	27.3	108	15.3
Narayanganj	9000	467	62.3	762	50.8	5960	388	78.1	651	65.5	6117	309	60.6	471	46.2
Narshingdi	6619	285	51.7	416	37.7	7870	462	70.4	739	56.3	5000	238	57.1	288	34.6
Manikganj	6600	360	65.5	559	50.8	3500	144	49.4	274	47.0	4000	283	84.9	433	65.0
Tangail	12817	639	59.8	1037	48.5	8933	412	55.3	630	42.3	9589	806	100.9	1153	72.1
Jamalpur	6200	138	26.7	209	20.2	4817	213	53.1	358	44.6	3902	389	119.6	463	71.2
Sherpur	4683	63	16.1	114	14.6	4000	106	31.8	152	22.8	3000	260	104.0	302	60.4
Mymensingh	19118	510	32.0	878	27.6	11816	568	57.7	911	46.3	10818	1400	155.3	1856	102.9
Kishoreganj	6900	594	103.3	861	74.9	6118	442	86.7	781	76.6	6000	721	144.2	1005	100.5
Netrokona	5000	213	51.1	331	39.7	3986	174	52.4	300	45.2	4545	280	73.9	351	46.3
Dhaka Div.	132039	6608	60.1	11092	50.4	96859	5684	70.4	9656	59.8	92940	7576	97.8	10561	68.2
B. Baria	7979	313	47.1	404	30.4	6343	279	52.8	464	43.9	6500	278	51.3	352	32.5
Comilla	19000	669	42.3	971	30.7	14131	845	71.8	1359	57.7	14170	630	53.4	834	35.3
Chandpur	7000	285	48.9	419	35.9	5500	207	45.2	353	38.5	5000	169	40.6	212	25.4
Feni	3750	127	40.6	179	28.6	3500	130	44.6	226	38.7	2647	133	60.3	170	38.5
Noakhali	7000	220	37.7	321	27.5	7000	213	36.5	318	27.3	6500	169	31.2	228	21.0
Laxmipur	7343	137	22.4	215	17.6	5000	213	51.1	312	37.4	4510	174	46.3	245	32.6
Chittagong	15500	593	45.9	775	30.0	14000	1055	90.4	1718	73.6	12881	1009	94.0	1283	59.8
Cox's Bazar	5893	81	16.5	109	11.1	4000	216	64.8	321	48.2	4158	199	57.4	231	33.3
Rangamati	2417	46	22.8	71	17.6	1338	62	55.6	120	53.8	1354	186	164.8	305	135.2
Khagrachhari	3400	76	26.8	125	22.1	1492	40	32.2	70	28.2	1807	84	55.8	130	43.2
Bandarban	1620	68	50.4	77	28.5	1200	64	64.0	104	52.0	1346	74	66.0	81	36.1
Chittagong Div.	80902	2615	38.8	3666	27.2	63504	3324	62.8	5365	50.7	60873	3105	61.2	4071	40.1
Sylhet	9500	612	77.3	851	53.7	7100	385	65.1	597	50.5	6432	588	109.7	748	69.8
Habiganj	6500	272	50.2	367	33.9	3500	115	39.4	181	31.0	5500	179	39.1	226	24.7
Moulavibazar	4950	243	58.9	386	46.8	4555	296	78.0	508	66.9	4300	363	101.3	538	75.1
Sunamganj	8500	357	50.4	479	33.8	5000	251	60.2	441	52.9	8000	244	36.6	327	24.5
Sylhet Div.	29450	1484	60.5	2083	42.4	20155	1047	62.3	1727	51.4	24232	1374	68.0	1839	45.5
National	453167	18791	49.8	30098	39.9	346449	16699	57.8	28351	49.1	351923	25757	87.8	35837	61.1

Table :10**District wise Projection, Performance and Achievement Rate of Short Acting Methods**

District	Injectables					Oral Pill					Condom				
	Yearly Projection	Reporting Month		Jul'14 to Aug'14		Yearly Projection	Reporting Month		Jul'14 to Aug'14		Yearly Projection	Reporting Month		Jul'14 to Aug'14	
		Perform. (in CYP)	Achi. Rate (%)	Perform.	Achi. Rate(%)		Perform. (in CYP)	Achi. Rate (%)	Perform.	Achi. Rate(%)		Perform. (in CYP)	Achi. Rate (%)	Perform.	Achi. Rate(%)
Dinajpur	110184	5737	62.5	10800	58.8	272219	14095	62.1	28260	62.3	38888	1022	31.5	1979	30.5
Thakurgaon	50109	3848	92.2	7327	87.7	123798	5804	56.3	12436	60.3	17685	238	16.1	501	17.0
Panchgarh	36805	2888	94.2	5653	92.2	90929	6296	83.1	12787	84.4	12990	271	25.0	532	24.6
Nilphamari	68137	4911	86.5	9414	82.9	168337	10641	75.9	21172	75.5	24048	566	28.2	1079	26.9
Rangpur	108455	8515	94.2	16480	91.2	267947	14924	66.8	29984	67.1	38278	1223	38.3	2382	37.3
Kurigram	86552	8765	121.5	16764	116.2	213834	15628	87.7	31014	87.0	30548	1479	58.1	2922	57.4
Gaibandha	92281	7120	92.6	14237	92.6	227988	14216	74.8	28451	74.9	32570	1171	43.1	2361	43.5
Lalmonirhat	46381	3886	100.5	7295	94.4	114589	6130	64.2	12091	63.3	16370	409	30.0	822	30.1
Bogra	129149	6305	58.6	11960	55.6	319073	14898	56.0	29698	55.8	45582	2392	63.0	4749	62.5
Joipurhat	36103	1204	40.0	2206	36.7	89195	3510	47.2	7063	47.5	12742	442	41.6	807	38.0
Noagaon	98240	3680	45.0	6834	41.7	242712	13100	64.8	26051	64.4	34673	1118	38.7	2139	37.0
Nawabganj	60323	3190	63.4	5190	51.6	149033	5277	42.5	10561	42.5	21290	851	47.9	1617	45.6
Rajshahi	102938	6519	76.0	12657	73.8	254317	11260	53.1	22683	53.5	36331	2826	93.3	5476	90.4
Natore	69494	3314	57.2	6401	55.3	171691	9082	63.5	18588	65.0	24527	1256	61.5	2471	60.5
Pabna	96716	7006	86.9	13475	83.6	238946	12469	62.6	24648	61.9	34135	1634	57.4	3110	54.7
Serajganj	105942	8108	91.8	15729	89.1	261740	14148	64.9	28323	64.9	37391	2130	68.4	4155	66.7
Rajshahi Div.	1297807	84995	78.6	162419	75.1	3206348	171477	64.2	343811	64.3	458050	19026	49.8	37100	48.6
Kushtia	77559	4761	73.7	9004	69.7	191617	7925	49.6	15693	49.1	27374	1443	63.3	2712	59.4
Meherpur	27721	2786	120.6	6449	139.6	68487	2732	47.9	6601	57.8	9784	632	77.5	1462	89.7
Chuadanga	44872	3220	86.1	6009	80.4	110859	4392	47.5	8708	47.1	15837	542	41.1	1029	39.0
Jhenaidaha	66934	3523	63.2	6567	58.9	165365	8667	62.9	17203	62.4	23624	806	40.9	1596	40.5
Magura	31961	1774	66.6	3327	62.4	78963	4414	67.1	9085	69.0	11280	399	42.5	732	38.9
Narail	26026	1256	57.9	2567	59.2	64299	3242	60.5	6627	61.8	9186	468	61.2	920	60.1
Jessore	101979	8214	96.7	15649	92.1	251947	11910	56.7	23370	55.7	35992	1893	63.1	3636	60.6
Khulna	85711	5409	75.7	10382	72.7	211757	12555	71.1	25200	71.4	30251	2379	94.4	4777	94.7
Bagerhat	51676	3312	76.9	6197	72.0	127669	9448	88.8	18818	88.4	18238	1310	86.2	2490	81.9
Satkhira	72731	3653	60.3	6542	54.0	179689	9734	65.0	19427	64.9	25670	1153	53.9	2160	50.5
Khulna Div.	587169	37906	77.5	72691	74.3	1450654	75019	62.1	150733	62.3	207236	11025	63.8	21514	62.3
Barguna	33153	2501	90.5	4855	87.9	81908	3319	48.6	6469	47.4	11701	203	20.9	404	20.7
Patuakhali	56614	4157	88.1	8086	85.7	139869	6270	53.8	12634	54.2	19981	435	26.1	813	24.4
Barisal	71796	6230	104.1	12091	101.0	177379	8201	55.5	16272	55.0	25340	914	43.3	1769	41.9
Jhalakati	19515	1159	71.3	2264	69.6	48215	2141	53.3	4340	54.0	6888	258	44.9	506	44.1
Bhola	60175	9132	182.1	18007	179.5	148669	5395	43.5	10781	43.5	21238	809	45.7	1562	44.1
Pirojpur	32697	1876	68.9	3510	64.4	80781	4474	66.5	8776	65.2	11540	402	41.8	775	40.3
Barisal Div.	273951	25055	109.7	48812	106.9	676820	29798	52.8	59272	52.5	96689	3021	37.5	5830	36.2

District	Injectables					Oral Pill					Condom				
	Yearly Projection	Reporting Month		Jul'14 to Aug'14		Yearly Projection	Reporting Month		Jul'14 to Aug'14		Yearly Projection	Reporting Month		Jul'14 to Aug'14	
		Perform. (in CYP)	Achi. Rate (%)	Perform.	Achi. Rate(%)		Perform. (in CYP)	Achi. Rate (%)	Perform.	Achi. Rate(%)		Perform. (in CYP)	Achi. Rate (%)	Perform.	Achi. Rate(%)
Gopalganj	38973	1875	57.7	3987	61.4	96286	6658	83.0	13220	82.4	13755	962	83.9	1959	85.4
Madaripur	37957	2633	83.3	5154	81.5	93776	5440	69.6	10874	69.6	13397	567	50.8	1134	50.8
Shariatpur	36776	2159	70.4	4155	67.8	90859	4517	59.7	8799	58.1	12980	588	54.4	1126	52.0
Faridpur	64731	2956	54.8	5779	53.6	159925	7966	59.8	16216	60.8	22846	1343	70.5	2697	70.8
Rajbari	37936	2218	70.2	4213	66.6	93723	5074	65.0	10092	64.6	13389	793	71.1	1547	69.3
Dhaka	132795	13665	123.5	25315	114.4	328081	24002	87.8	45536	83.3	46869	5588	143.1	10513	134.6
Gazipur	75369	2404	38.3	4635	36.9	186206	10574	68.1	21198	68.3	26601	1677	75.7	3301	74.4
Munshiganj	47347	2112	53.5	3961	50.2	116974	6263	64.2	12245	62.8	16711	873	62.7	1716	61.6
Narayanganj	84629	5945	84.3	11293	80.1	209084	10703	61.4	21199	60.8	29869	1924	77.3	3788	76.1
Narshingdi	69738	5620	96.7	10779	92.7	172295	8827	61.5	17652	61.5	24614	1607	78.4	3201	78.0
Manikganj	52704	2704	61.6	5222	59.5	130211	5998	55.3	11994	55.3	18602	1061	68.5	2050	66.1
Tangail	141260	7723	65.6	15195	64.5	348995	24507	84.3	48811	83.9	49856	3512	84.5	6861	82.6
Jamalpur	82626	5444	79.1	10620	77.1	204134	12524	73.6	24897	73.2	29162	1552	63.8	3119	64.2
Sherpur	52105	4328	99.7	7868	90.6	128730	7910	73.7	15717	73.3	18390	819	53.4	1609	52.5
Mymensingh	173990	6888	47.5	12868	44.4	429857	33495	93.5	67217	93.8	61408	2925	57.2	5812	56.8
Kishoreganj	90651	4429	58.6	8545	56.6	223962	17156	91.9	34080	91.3	31995	2226	83.5	4355	81.7
Netrokona	68696	3845	67.2	7584	66.2	169720	13105	92.7	26029	92.0	24246	1205	59.6	2391	59.2
Dhaka Div.	1288284	76947	71.7	147171	68.5	3182819	204718	77.2	405776	76.5	454688	29221	77.1	57181	75.5
B. Baria	85824	5161	72.2	10815	75.6	212036	8264	46.8	16495	46.7	30291	2336	92.5	4645	92.0
Comilla	177944	11487	77.5	22344	75.3	439626	17125	46.7	34192	46.7	62804	3725	71.2	7352	70.2
Chandpur	77391	5543	85.9	10869	84.3	191201	5323	33.4	11673	36.6	27314	983	43.2	1958	43.0
Feni	44940	2963	79.1	5886	78.6	111028	3584	38.7	7213	39.0	15861	891	67.4	1810	68.5
Noakhali	89083	5126	69.0	9792	66.0	220088	6639	36.2	13231	36.1	31441	1260	48.1	2449	46.7
Laxmipur	53669	4445	99.4	8743	97.7	132594	3433	31.1	6696	30.3	18942	444	28.1	876	27.7
Chittagong	171648	10308	72.1	18957	66.3	424072	18875	53.4	36877	52.2	60582	3106	61.5	5991	59.3
Cox's Bazar	64465	7108	132.3	12557	116.9	159266	7779	58.6	15178	57.2	22752	763	40.2	1551	40.9
Rangamati	16581	934	67.6	1839	66.5	40964	2616	76.6	5223	76.5	5852	379	77.8	747	76.6
Khagrachhari	17782	1434	96.8	2715	91.6	43932	3045	83.2	6039	82.5	6276	342	65.4	666	63.7
Bandarban	10963	961	105.1	1843	100.8	27086	1495	66.2	2941	65.2	3869	212	65.7	401	62.2
Chittagong Div.	810290	55468	82.1	106359	78.8	2001893	78177	46.9	155759	46.7	285985	14440	60.6	28445	59.7
Sylhet	83803	5894	84.4	10937	78.3	207042	9585	55.6	18772	54.4	29577	2644	107.3	5036	102.2
Habiganj	62869	1879	35.9	3577	34.1	155323	7256	56.1	14409	55.7	22189	714	38.6	1437	38.8
Moulavibazar	54182	2914	64.5	5435	60.2	133862	5918	53.0	11492	51.5	19123	706	44.3	1389	43.6
Sunamganj	63452	2560	48.4	4927	46.6	156764	8347	63.9	16512	63.2	22395	1299	69.6	2574	69.0
Sylhet Div.	264306	13246	60.1	24876	56.5	652991	31105	57.2	61185	56.2	93284	5362	69.0	10436	67.1
National	4521808	293617	77.9	562327	74.6	11171525	590295	63.4	1176536	63.2	1595932	82097	61.7	160507	60.3

Table :11**Old Users, New Users, Dropout and CAR by District at the end of August 2014**

Name of District	Total E. Couple	Oral Pill					Condom					Injectable				
		Old	New	Total	No Method	Switch Over	Old	New	Total	No Method	Switch Over	Old	New	Total	No Method	Switch Over
Dinajpur	649242	261783	2905	264688	1557	1334	26830	781	27611	389	366	73409	1465	74874	632	732
Thakurgaon	295146	113560	1901	115461	1075	761	8727	295	9022	148	164	59137	1270	60407	522	607
Panchgarh	217020	90221	1891	92112	933	771	5476	212	5688	105	113	36279	947	37226	389	510
Nilphamari	402194	160844	2346	163190	1318	1124	11973	407	12380	253	195	66589	1422	68011	549	651
Rangpur	637908	237660	5014	242674	2574	1749	25800	1023	26823	406	393	114060	3066	117126	1534	1216
Kurigram	510836	202770	2675	205445	2386	1097	17195	622	17817	717	368	111177	1921	113098	1262	978
Gaibandha	543651	215917	3112	219029	1812	1874	22058	837	22895	417	381	97132	1825	98957	924	1020
Lalmonirhat	273765	98333	1234	99567	706	570	8529	721	9250	114	87	58081	1548	59629	421	363
Bogra	760640	326238	4490	330728	3111	1536	50941	1676	52617	1035	436	106110	1949	108059	971	842
Joipurhat	212638	93784	1086	94870	595	509	11929	324	12253	97	122	24942	459	25401	141	246
Naogaon	579049	263401	2100	265501	1539	670	24565	571	25136	271	194	53695	806	54501	375	284
Nawabganj	356093	140882	1650	142532	875	646	35893	729	36622	351	321	55270	761	56031	342	341
Rajshahi	606629	215562	3856	219418	1958	1405	72034	3283	75317	1701	1332	87211	3175	90386	1502	1240
Natore	409490	164468	2953	167421	1367	1267	31160	1035	32195	423	592	50566	1244	51810	442	833
Pabna	569883	209617	2292	211909	1395	879	37878	684	38562	377	330	103023	1411	104434	634	609
Serajganj	624669	246948	3302	250250	1531	1030	48000	1129	49129	535	328	127655	1737	129392	672	622
Rajshahi	7648853	3041988	42807	3084795	24732	17222	438988	14329	453317	7339	5722	1224336	25006	1249342	11312	11094
Kustia	458328	156383	2383	158766	1338	842	41775	1094	42869	605	429	72737	1566	74303	812	550
Meherpur	163277	48178	495	48673	347	223	12966	222	13188	124	91	37518	419	37937	213	224
Chuadanga	264630	94338	1537	95875	856	837	13097	565	13662	213	267	50046	1096	51142	543	474
Jhenaidaha	394283	157829	1968	159797	1366	724	20775	535	21310	281	209	51727	864	52591	428	384
Magura	188595	76265	861	77126	453	241	10482	200	10682	118	79	25853	384	26237	204	156
Narail	154270	60288	1034	61322	551	303	12807	448	13255	171	120	20964	603	21567	251	203
Jessore	601332	191638	2173	193811	1210	924	39808	1098	40906	503	425	129027	1620	130647	846	765
Khulna	504725	193896	2887	196783	1381	1169	50619	1702	52321	662	656	65993	1734	67727	777	778
Bagerhat	304558	123609	1681	125290	952	691	22218	662	22880	362	304	45809	956	46765	497	417
Satkhira	428711	177192	2259	179451	1170	864	22257	649	22906	332	279	64490	1023	65513	458	484
Khulna	3462709	1279616	17278	1296894	9624	6818	246804	7175	253979	3371	2859	564164	10265	574429	5029	4435
Barguna	195215	63392	1053	64445	729	447	4844	244	5088	148	98	41590	815	42405	431	308
Patuakhali	333778	117278	1644	118922	783	575	11327	319	11646	279	127	78006	1036	79042	486	404
Barisal	423079	154851	2160	157011	1563	801	26167	647	26814	468	238	68303	1217	69520	790	337
Jhalakati	114852	40392	581	40973	385	211	6232	193	6425	123	64	18418	354	18772	241	111
Bhola	354479	100953	2273	103226	1324	859	12043	536	12579	288	177	114532	2132	116664	1121	715
Pirojpur	192658	72807	1129	73936	711	385	8906	267	9173	199	96	30264	800	31064	423	287
Barisal	1614061	549673	8840	558513	5495	3278	69519	2206	71725	1505	800	351113	6354	357467	3492	2162

Name of District	Total E. Couple	Oral Pill					Condom					Injectable				
		Old	New	Total	No Method	Switch Over	Old	New	Total	No Method	Switch Over	Old	New	Total	No Method	Switch Over
Gopalganj	229894	92352	1265	93617	787	447	20957	771	21728	331	227	25000	675	25675	245	225
Madaripur	223796	88732	995	89727	841	349	15924	293	16217	271	116	37090	514	37604	389	198
Shariatpur	216114	79475	732	80207	548	222	18755	264	19019	224	77	39332	492	39824	393	167
Faridpur	381833	138955	1990	140945	1249	741	37571	1014	38585	526	426	50142	1091	51233	537	443
Rajbari	224769	83645	1773	85418	1037	764	16634	775	17409	391	299	32496	1012	33508	501	487
Dhaka	786299	274639	3088	277727	1368	731	76655	1628	78283	596	372	97432	1519	98951	604	433
Gazipur	444547	200017	1666	201683	976	572	38623	726	39349	352	305	40951	776	41727	300	214
Munshiganj	278915	104913	1313	106226	766	501	24850	605	25455	316	301	32973	630	33603	313	282
Narayanganj	499217	190038	2801	192839	1423	983	37940	1044	38984	645	546	73429	1574	75003	806	573
Narshingdi	410913	154206	2000	156206	931	684	29880	801	30681	354	255	65479	1174	66653	488	418
Manikganj	309655	110022	1692	111714	1075	580	26668	690	27358	374	273	39766	971	40737	481	306
Tangail	832521	345772	3284	349056	1964	1276	61081	1156	62237	750	465	99345	1564	100909	763	558
Jamalpur	486532	184402	3552	187954	1372	1160	26682	1016	27698	333	310	95731	1726	97457	461	552
Sherpur	306896	131184	1547	132731	1009	660	14232	350	14582	158	155	50907	951	51858	313	336
Mymensingh	1025531	484661	4817	489478	3571	1711	45612	1091	46703	806	395	112947	2080	115027	1213	886
Kishoreganj	535889	229656	6753	236409	3716	1851	33081	1786	34867	1479	816	65466	2460	67926	1515	1220
Netrokona	405055	174707	2026	176733	1178	596	16419	355	16774	293	192	51062	959	52021	597	431
Dhaka	7598376	3067376	41294	3108670	23811	13828	541564	14365	555929	8199	5530	1009548	20168	1029716	9919	7729
Brahmanbaria	505522	158008	1959	159967	1276	463	44401	786	45187	635	200	82467	1135	83602	869	287
Comilla	1048839	379321	4514	383835	2531	1388	72391	1683	74074	1061	567	187341	2614	189955	1332	826
Chandpur	455921	169808	1976	171784	1187	579	22086	510	22596	346	190	89202	1005	90207	582	389
Feni	264816	88763	1016	89779	554	275	20463	454	20917	268	133	45190	648	45838	402	178
Noakhali	525465	187067	2026	189093	1109	580	38500	690	39190	350	251	90283	1180	91463	643	344
Lakshmipur	316410	105584	1117	106701	741	312	14597	326	14923	208	92	69918	668	70586	417	165
Chittagong	1012926	391267	4946	396213	2834	1551	67759	1685	69444	926	556	122222	2667	124889	1195	891
Cox's Bazar	380380	131064	1656	132720	963	499	17248	377	17625	254	159	89657	1354	91011	810	408
Rangamati	97822	38145	412	38557	282	154	6370	153	6523	96	83	13951	277	14228	150	103
Khagrachhari	104365	41058	464	41522	300	111	4222	121	4343	100	41	16679	249	16928	148	45
Bandarban	64660	19238	397	19635	250	187	3321	193	3514	150	95	11286	357	11643	176	145
Chittagong	4777126	1709323	20483	1729806	12027	6099	311358	6978	318336	4394	2367	818196	12154	830350	6724	3781
Sylhet	493771	150506	2042	152548	1266	559	48609	968	49577	622	282	68697	1102	69799	681	336
Habiganj	371364	150988	2218	153206	1394	480	22435	544	22979	392	190	39644	930	40574	691	241
Moulavi Bazar	319915	114433	1943	116376	1155	808	19981	674	20655	367	355	44405	969	45374	539	423
Sunamganj	374030	140439	2633	143072	1431	656	32578	1128	33706	694	285	45662	1239	46901	621	256
Sylhet	1559080	556366	8836	565202	5246	2503	123603	3314	126917	2075	1112	198408	4240	202648	2532	1256
National	26660205	10204342	139538	10343880	80935	49748	1731836	48367	1780203	26883	18390	4165765	78187	4243952	39008	30457

Name of District	IUD					Implant					Permanent Method						Total Acceptors	CAR (%)
	Old	New	Total	Dropout	Switch Over	Old	New	Total	Dropout	Switch Over	Male			Female				
											Old	New	Total	Old	New	Total		
Dinajpur	9994	191	10185	91	119	21087	533	21620	229	272	49875	153	50028	71053	283	71336	520342	80.1
Thakurgaon	2039	45	2084	30	15	8170	112	8282	42	84	20565	40	20605	21516	106	21622	237483	80.5
Panchgarh	4165	110	4275	42	60	9025	195	9220	98	157	13061	88	13149	12474	69	12543	174213	80.3
Nilphamari	5815	129	5944	74	116	12448	372	12820	124	163	23066	78	23144	44050	145	44195	329684	82.0
Rangpur	12024	157	12181	147	110	18792	526	19318	244	214	38537	290	38827	37939	375	38314	495263	77.6
Kurigram	10591	107	10698	196	97	10961	289	11250	113	90	20151	178	20329	25316	142	25458	404095	79.1
Gaibandha	15581	308	15889	196	132	22765	655	23420	266	211	22170	119	22289	33217	234	33451	435930	80.2
Lalmonirhat	2085	88	2173	49	52	8860	329	9189	63	59	14871	52	14923	25870	77	25947	220678	80.6
Bogra	19758	240	19998	175	96	34468	781	35249	241	244	27989	138	28127	51831	264	52095	626873	82.4
Joipurhat	2964	48	3012	25	41	6454	329	6783	48	76	16045	60	16105	20905	94	20999	179423	84.4
Naogaon	13234	112	13346	71	79	11467	423	11890	100	53	22454	64	22518	71700	291	71991	464883	80.3
Nawabganj	5687	50	5737	43	40	2804	39	2843	30	47	18001	44	18045	26273	217	26490	288300	81.0
Rajshahi	9647	132	9779	70	49	19312	306	19618	159	232	11878	39	11917	79590	338	79928	506363	83.5
Natore	8458	118	8576	48	53	13273	299	13572	88	185	5527	35	5562	55712	238	55950	335086	81.8
Pabna	24031	290	24321	159	120	16607	309	16916	121	137	12728	83	12811	37449	168	37617	446570	78.4
Serajganj	17493	231	17724	83	43	6407	98	6505	48	42	13627	39	13666	20890	131	21021	487687	78.1
Rajshahi	163566	2356	165922	1499	1222	222900	5595	228495	2014	2266	330545	1500	332045	635785	3172	638957	6152873	80.4
Kustia	6034	62	6096	32	21	10747	212	10959	78	81	4949	29	4978	61245	197	61442	359413	78.4
Meherpur	2464	22	2486	17	18	2560	83	2643	19	29	809	1	810	25870	111	25981	131718	80.7
Chuadanga	6194	94	6288	60	54	8624	197	8821	78	124	1675	13	1688	36593	201	36794	214270	81.0
Jhenaidaha	7436	129	7565	60	33	12574	338	12912	120	94	3540	12	3552	50079	183	50262	307989	78.1
Magura	5505	72	5577	70	41	6778	214	6992	95	54	2744	13	2757	21137	111	21248	150619	79.9
Narail	7058	89	7147	74	37	3436	72	3508	45	25	3114	6	3120	15295	77	15372	125291	81.2
Jessore	17925	290	18215	147	93	20086	396	20482	198	161	25525	56	25581	52663	228	52891	482533	80.2
Khulna	12478	215	12693	101	87	18057	529	18586	135	163	19216	93	19309	32198	171	32369	399788	79.2
Bagerhat	12038	128	12166	68	52	8327	193	8520	47	50	14051	43	14094	20930	76	21006	250721	82.3
Satkhira	9617	127	9744	74	63	13015	378	13393	99	143	13388	37	13425	37923	185	38108	342540	79.9
Khulna	86749	1228	87977	703	499	104204	2612	106816	914	924	89011	303	89314	353933	1540	355473	2764882	79.8
Barguna	4894	131	5025	99	42	9737	243	9980	111	82	13997	81	14078	9110	29	9139	150160	76.9
Patuakhali	8999	117	9116	81	61	19033	306	19339	155	101	9918	71	9989	18582	71	18653	266707	79.9
Barisal	14019	302	14321	193	92	13390	312	13702	118	81	9425	36	9461	27215	137	27352	318181	75.2
Jhalakati	5846	83	5929	36	21	5281	123	5404	41	41	5381	26	5407	8016	50	8066	90976	79.2
Bhola	7289	121	7410	86	23	11380	182	11562	128	79	8803	55	8858	9479	28	9507	269806	76.1
Pirojpur	9066	146	9212	104	42	7288	219	7507	96	42	6600	28	6628	8851	70	8921	146441	76.0
Barisal	50113	900	51013	599	281	66109	1385	67494	649	426	54124	297	54421	81253	385	81638	1242271	77.0

Name of District	IUD					Implant					Permanent Method						Total Acceptors	CAR (%)
	Old	New	Total	Dropout	Switch Over	Old	New	Total	Dropout	Switch Over	Male			Female				
											Old	New	Total	Old	New	Total		
Gopalganj	6512	93	6605	33	21	5928	183	6111	19	22	8636	167	8803	22128	178	22306	184845	80.4
Madaripur	7533	69	7602	86	64	10543	277	10820	91	58	2734	11	2745	13010	83	13093	177808	79.5
Shariatpur	10693	182	10875	117	22	5175	151	5326	65	33	4265	27	4292	10845	123	10968	170511	78.9
Faridpur	15735	181	15916	128	75	8397	311	8708	74	38	7889	75	7964	37536	188	37724	301075	78.8
Rajbari	6226	95	6321	63	48	8478	174	8652	82	92	6151	62	6213	16660	95	16755	174276	77.5
Dhaka	21777	460	22237	130	71	23023	516	23539	113	113	16666	521	17187	56737	359	57096	575020	73.1
Gazipur	11024	226	11250	80	63	9820	277	10097	69	74	4929	54	4983	40877	168	41045	350134	78.8
Munshiganj	7169	84	7253	105	49	4081	102	4183	46	44	2474	10	2484	26285	206	26491	205695	73.7
Narayanganj	13152	280	13432	102	78	14251	243	14494	121	99	10626	207	10833	35723	164	35887	381472	76.4
Narshingdi	16460	296	16756	106	85	8929	224	9153	57	58	3201	22	3223	30931	188	31119	313791	76.4
Manikganj	9706	106	9812	85	53	13083	242	13325	110	99	3365	64	3429	38083	184	38267	244642	79.0
Tangail	16912	278	17190	155	82	26024	755	26779	257	207	19718	148	19866	61791	308	62099	638136	76.7
Jamalpur	10744	189	10933	58	85	15117	334	15451	81	100	16608	90	16698	30521	122	30643	386834	79.5
Sherpur	7417	69	7486	32	26	12514	165	12679	87	62	9517	15	9532	17743	54	17797	246665	80.4
Mymensingh	24614	381	24995	227	155	26888	978	27866	221	179	35944	211	36155	50912	157	51069	791293	77.2
Kishoreganj	21144	396	21540	593	324	23298	715	24013	500	168	14474	152	14626	39231	599	39830	439211	82.0
Netrokona	12033	114	12147	151	75	8924	219	9143	75	84	19151	54	19205	27066	155	27221	313244	77.3
Dhaka	218851	3499	222350	2251	1376	224473	5866	230339	2068	1530	186348	1890	188238	556079	3331	559410	5894652	77.6
Brahmanbaria	23349	240	23589	199	34	12009	256	12265	87	36	5730	53	5783	42134	297	42431	372824	73.8
Comilla	33797	547	34344	217	118	23344	553	23897	185	123	16186	121	16307	84696	498	85194	807606	77.0
Chandpur	11997	131	12128	94	45	9950	143	10093	68	47	4992	43	5035	34319	234	34553	346396	76.0
Feni	10547	104	10651	63	30	5414	131	5545	36	23	1586	17	1603	25809	110	25919	200252	75.6
Noakhali	14758	153	14911	107	28	7369	124	7493	25	13	6900	31	6931	37570	180	37750	386831	73.6
Lakshmipur	9618	106	9724	69	14	9226	140	9366	94	32	4599	8	4607	17300	115	17415	233322	73.7
Chittagong	39349	643	39992	346	187	33110	808	33918	291	167	9379	165	9544	68170	257	68427	742427	73.3
Cox's Bazar	9550	131	9681	48	21	10393	182	10575	77	55	10827	43	10870	13830	49	13879	286361	75.3
Rangamati	3554	60	3614	19	10	5200	135	5335	27	19	2255	34	2289	4963	15	4978	75524	77.2
Khagrachhari	3714	23	3737	42	17	3626	105	3731	26	17	3963	47	4010	5269	30	5299	79570	76.2
Bandarban	3880	49	3929	47	16	3834	77	3911	21	20	3419	60	3479	3370	3	3373	49484	76.5
Chittagong	164113	2187	166300	1251	520	123475	2654	126129	937	552	69836	622	70458	337430	1788	339218	3580597	75.0
Sylhet	20940	222	21162	180	54	17674	505	18179	185	76	14672	97	14769	42519	361	42880	368914	74.7
Habiganj	12159	102	12261	108	45	5270	180	5450	60	29	13936	82	14018	25611	227	25838	274326	73.9
Moulavi Bazar	13984	279	14263	147	111	12279	367	12646	117	98	15885	119	16004	27011	188	27199	252517	78.9
Sunamganj	15743	201	15944	120	32	6074	224	6298	80	23	14485	76	14561	28511	291	28802	289284	77.3
Sylhet	62826	804	63630	555	242	41297	1276	42573	442	226	58978	374	59352	123652	1067	124719	1185041	76.0
National	746218	10974	757192	6858	4140	782458	19388	801846	7024	5924	788842	4986	793828	2088132	11283	2099415	20820316	78.1

Table :12**Number of New and Total Acceptors upto the end of July and August 2014**

Method	New Acceptors		% Change of Aug'14 over Jul'14	Total Acceptors		% Change of Aug'14 over Jul'14
	Jul'14	Aug'14		Jul'14	Aug'14	
Per.Method (Male)	3674	4986	35.7	791001	793828	0.4
Per.Method (Female)	7116	11283	58.6	2091541	2099415	0.4
Per.Method (Total)	10790	16269	50.8	2882542	2893243	0.4
IUD	9207	10974	19.2	758404	757192	-0.2
Implant	12199	19388	58.9	795875	801846	0.8
Injectables	68143	78187	14.7	4236098	4243952	0.2
Oral Pill	123306	139538	13.2	10336408	10343880	0.1
Condom	44771	48367	8.0	1776352	1780203	0.2
Total	268416	312723	16.5	20785679	20820316	0.2

Table :13**CAR(%) by Division upto the end of July and August 2014**

Division	Jul'14	Aug'14	Change of Aug'14 over Jul'14
Rajshahi	80.4	80.4	0.0
Khulna	79.8	79.8	0.0
Barisal	77.0	77.0	0.0
Dhaka	77.6	77.6	0.0
Chittagong	74.9	75.0	0.0
Sylhet	75.9	76.0	0.1
National	78.1	78.1	0.0

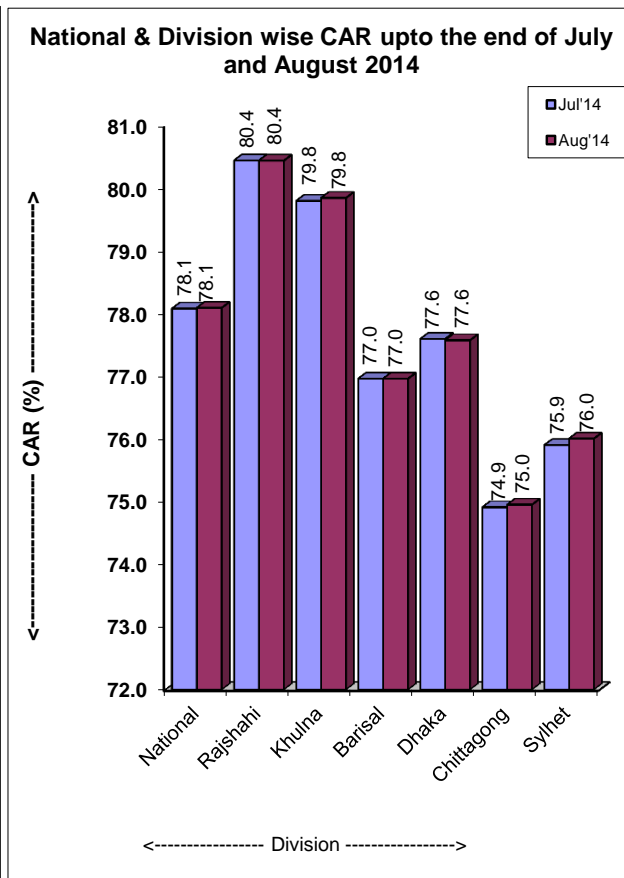
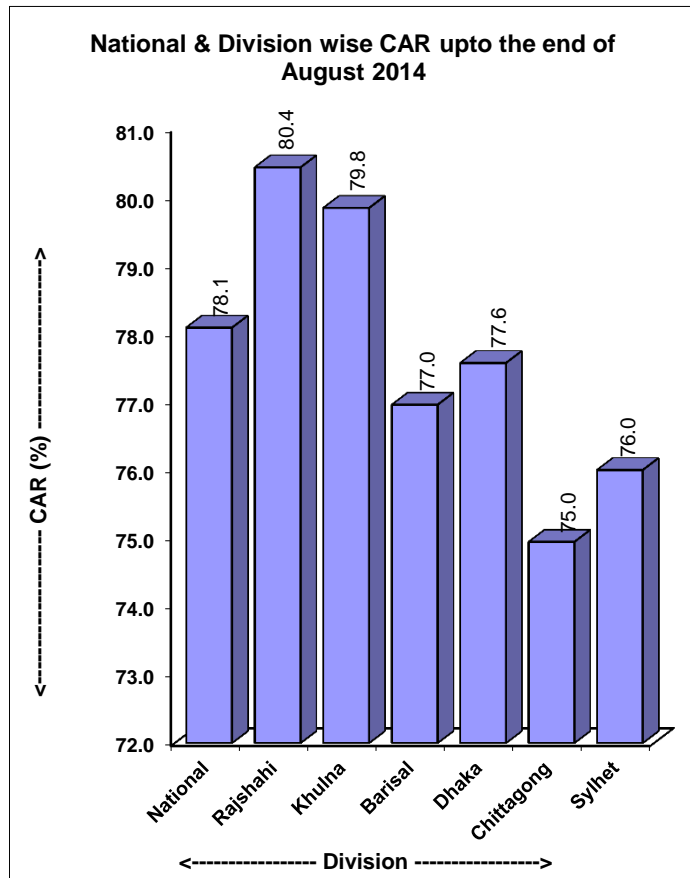


Table :14

District by Range of CAR upto the end of August 2014

Range	Sl.No.	District	CAR (%)
70% & above	1	Joipurhat	84.4
	2	Rajshahi	83.5
	3	Bogra	82.4
	4	Bagerhat	82.3
	5	Nilphamari	82.0
	6	Kishoreganj	82.0
	7	Natore	81.8
	8	Narail	81.2
	9	Chuadanga	81.0
	10	Nawabganj	81.0
	11	Meherpur	80.7
	12	Lalmonirhat	80.6
	13	Thakurgaon	80.5
	14	Gopalganj	80.4
	15	Sherpur	80.4
	16	Naogaon	80.3
	17	Panchgarh	80.3
	18	Jessore	80.2
	19	Gaibandha	80.2
	20	Dinajpur	80.1
	21	Patuakhali	79.9
	22	Satkhira	79.9
	23	Magura	79.9
	24	Jamalpur	79.5
	25	Madaripur	79.5
	26	Jhalakati	79.2
	27	Khulna	79.2
	28	Kurigram	79.1
	29	Manikganj	79.0
	30	Moulavi Bazar	78.9
	31	Shariatpur	78.9
	32	Faridpur	78.8
	33	Gazipur	78.8
	34	Kustia	78.4
	35	Pabna	78.4
	36	Jhenaidaha	78.1
	37	Serajganj	78.1
	38	Rangpur	77.6
	39	Rajbari	77.5
	40	Sunamganj	77.3
	41	Netrokona	77.3
	42	Rangamati	77.2
	43	Mymensingh	77.2
	44	Comilla	77.0
	45	Barguna	76.9
	46	Tangail	76.7
	47	Bandarban	76.5
	48	Narayanganj	76.4
	49	Narshingdi	76.4
	50	Khagrachhari	76.2
	51	Bhola	76.1
	52	Pirojpur	76.0
	53	Chandpur	76.0
	54	Feni	75.6
	55	Cox's Bazar	75.3
	56	Barisal	75.2
	57	Sylhet	74.7
	58	Habiganj	73.9
	59	Brahmanbaria	73.8
	60	Munshiganj	73.7
	61	Lakshmipur	73.7
	62	Noakhali	73.6
	63	Chittagong	73.3
	64	Dhaka	73.1

Range	Sl.No.	District	CAR (%)
60% - 69%		Nil	

0%-59%	Nil
--------	-----

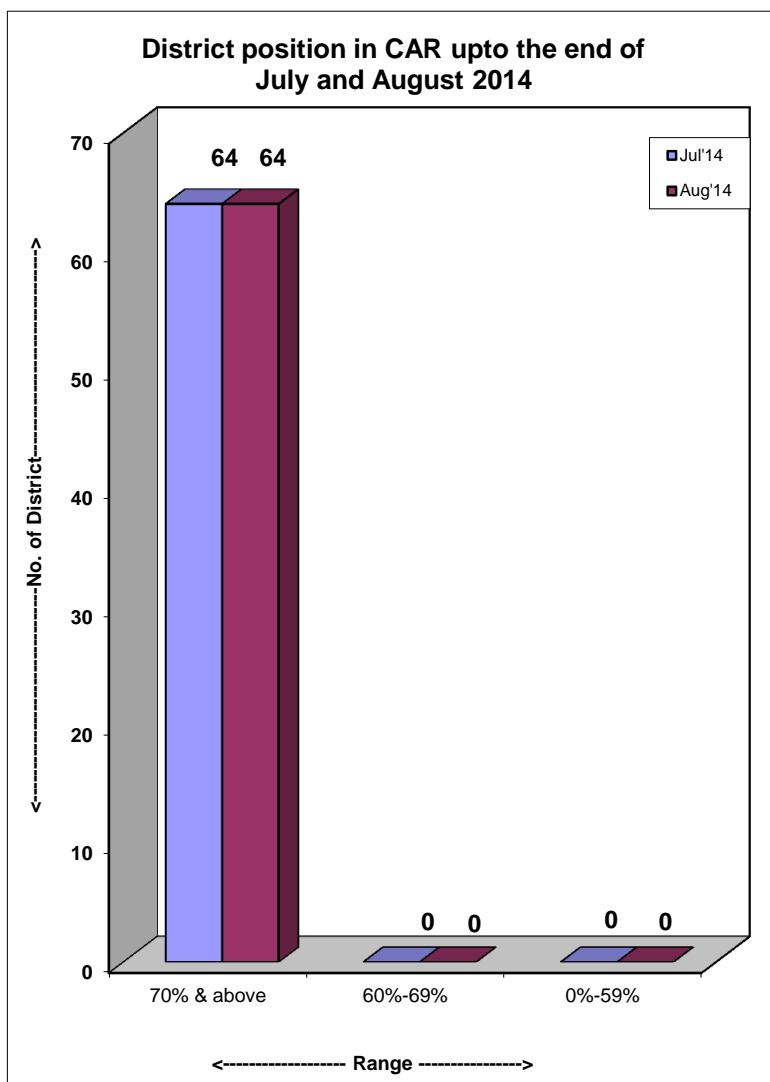


Table :15**List of Upazila achieved CAR 70% & above upto the end of August 2014**

Sl. No.	Name of District	Name of Upazila	Total Couples	Total Acceptors	CAR (%)	Sl. No.	Name of District	Name of Upazila	Total Couples	Total Acceptors	CAR (%)
1	Bagerhat	Bagerhat Sadar	53355	45905	86.0	70	Sherpur	Nalitabari	56891	46510	81.8
2	Gopalganj	Gopalganj Sadar	60890	52377	86.0	71	Jamalpur	Melandaha	63535	51940	81.8
3	Bogra	Shibganj	88974	75991	85.4	72	Satkhira	Tala	64377	52599	81.7
4	Rajshahi	Boalia	95513	81529	85.4	73	Kurigram	Chilmari	30078	24574	81.7
5	Joipurhat	Kalai	34830	29702	85.3	74	Nawabganj	Chapai Nawabganj (Sadar)	114517	93498	81.6
6	Bagerhat	Fakirhat	30291	25799	85.2	75	Panchgarh	Boda	53389	43574	81.6
7	Rajshahi	Godagari	69790	59385	85.1	76	Bogra	Sheerpur	82164	67053	81.6
8	Satkhira	Asasuni	56464	48040	85.1	77	Jessore	Keshobpur	58143	47449	81.6
9	Joipurhat	Joypurhat Sadar	64793	55026	84.9	78	Bogra	Shajahanpur	78853	64313	81.6
10	Bagerhat	Mongla	26503	22497	84.9	79	Faridpur	Nagarkanda	36438	29718	81.6
11	Bagerhat	Kachua	20010	16933	84.6	80	Bogra	Bogra Sadar	93483	76211	81.5
12	Satkhira	Debhata	26221	22177	84.6	81	Panchgarh	Debiganj	50133	40870	81.5
13	Bogra	Sariakandi	52348	44253	84.5	82	Bogra	Adamdighi	45477	37067	81.5
14	Rajshahi	Bagha	43449	36677	84.4	83	Gaibandha	Palashbari	59493	48490	81.5
15	Manikganj	Saturia	37472	31620	84.4	84	Naogaon	Porsa	28791	23466	81.5
16	Joipurhat	Akkelpur	31358	26419	84.2	85	Patuakhali	Bauphal	70008	57059	81.5
17	Joipurhat	Khetlal	26562	22369	84.2	86	Rajshahi	Charghat	48985	39911	81.5
18	Nilphamari	Syadpur	56936	47904	84.1	87	Patuakhali	Dumki	13833	11270	81.5
19	Manikganj	Ghior	36552	30742	84.1	88	Kishoreganj	Austagram	28541	23232	81.4
20	Rajshahi	Poba (Sadar)	72119	60579	84.0	89	Kishoreganj	Katiadi	57931	47134	81.4
21	Jessore	Monirampur	94199	78933	83.8	90	Nawabganj	Nachol	31154	25347	81.4
22	Bogra	Sonatola	39822	33321	83.7	91	Madaripur	Madaripur Sadar	66865	54382	81.3
23	Manikganj	Shibalaya	35994	30002	83.4	92	Gaibandha	Sadullahpur	70195	57084	81.3
24	Joipurhat	Panchbibi	55095	45907	83.3	93	Rajshahi	Puthiya	48659	39558	81.3
25	Kishoreganj	Nikli	26903	22415	83.3	94	Kurigram	Fulbari	37594	30562	81.3
26	Rajshahi	Bagmara	97399	81094	83.3	95	Pabna	Faridpur	28295	22969	81.2
27	Nawabganj	Bholahat	24163	20073	83.1	96	Gaibandha	Sundarganj	103302	83804	81.1
28	Bogra	Dupchanchia	43498	36086	83.0	97	Netrokona	Khaliajahuri	16690	13536	81.1
29	Kishoreganj	Kuliarchar	33474	27760	82.9	98	Bogra	Nandigram	43826	35529	81.1
30	Rajshahi	Mohanpur	42379	35130	82.9	99	Naogaon	Patnitola	54590	44243	81.0
31	Chuadanga	Damurhuda	70917	58774	82.9	100	Naogaon	Manda	91307	73973	81.0
32	Natore	Bagatipara	31519	26094	82.8	101	Meherpur	Gagni	76885	62282	81.0
33	Sunamganj	Sunamganj Sadar	40286	33351	82.8	102	Dinajpur	Hakimpur	20214	16371	81.0
34	Naogaon	Niamatpur	57751	47807	82.8	103	Naogaon	Naogaon Sadar	61037	49419	81.0
35	Khulna	Fultala	27581	22829	82.8	104	Serajganj	Sirajganj Sadar	108176	87585	81.0
36	Kishoreganj	Karimganj	53659	44408	82.8	105	Bagerhat	Rampal	33240	26893	80.9
37	Natore	Natore Sadar	106658	88260	82.8	106	Satkhira	Shyamnagar	73067	59108	80.9
38	Khagrachhari	Matiranga	23291	19272	82.7	107	Narail	Lohagara	47789	38657	80.9
39	Natore	Gurudashpur	52676	43557	82.7	108	Meherpur	Meherpur Sadar	62422	50485	80.9
40	Dinajpur	Parbatipur	82678	68333	82.6	109	Nawabganj	Shibganj	126030	101907	80.9
41	Kishoreganj	Bhariab Bazar	54519	45026	82.6	110	Rajbari	Rajbari Sadar	68715	55548	80.8
42	Jessore	Bagherpara	46127	38095	82.6	111	Patuakhali	Kalapara	51143	41334	80.8
43	Nilphamari	Nilphamari Sadar	99250	81938	82.6	112	Comilla	Burichong	61983	50073	80.8
44	Nilphamari	Domar	54591	45050	82.5	113	Serajganj	Rayganj	66892	54037	80.8
45	Bogra	Kahaloo	55065	45427	82.5	114	Chuadanga	Alamdanga	85050	68678	80.8
46	Kishoreganj	Kishoreganj Sadar	69355	57211	82.5	115	Dinajpur	Chirir Bandar	64412	52010	80.7
47	Kurigram	Nageswari	93907	77426	82.4	116	Jamalpur	Sharishabari	69026	55715	80.7
48	Bogra	Dhunot	66065	54462	82.4	117	Tangail	Kalihati	84638	68268	80.7
49	Bagerhat	Sarankhola	21356	17590	82.4	118	Dinajpur	Birampur	36620	29532	80.6
50	Chuadanga	Jiban Nagar	37216	30645	82.3	119	Magura	Sripur	36534	29455	80.6
51	Bagerhat	Morralganj	66238	54539	82.3	120	Shariatpur	Damoddyia	22464	18108	80.6
52	Thakurgaon	Thakurgaon Sadar	125483	103271	82.3	121	Magura	Shalikka	31787	25590	80.5
53	Nilphamari	Dimla	60136	49491	82.3	122	Nilphamari	Kishoreganj	55386	44570	80.5
54	Gazipur	Gazipur Sadar	129673	106716	82.3	123	Dinajpur	Birol	55855	44947	80.5
55	Khulna	Dumuria	64491	53063	82.3	124	Jessore	Jessore Sadar	144757	116474	80.5
56	Kishoreganj	Hossainpur	37268	30642	82.2	125	Patuakhali	Golachipa	79181	63710	80.5
57	Sherpur	Sribordi	56162	46158	82.2	126	Lalmonirhat	Kaliganj	53500	43037	80.4
58	Rajshahi	Tanore	43894	36062	82.2	127	Bogra	Gabtali	71065	57160	80.4
59	Kishoreganj	Pakundia	41999	34492	82.1	128	Dinajpur	Dinajpur Sadar	98990	79601	80.4
60	Patuakhali	Dashmina	27255	22380	82.1	129	Rangpur	Pirganj	92613	74441	80.4
61	Narail	Narail Sadar	63184	51866	82.1	130	Narail	Kalia	43297	34768	80.3
62	Rajshahi	Durgapur	44442	36438	82.0	131	Faridpur	Bhanga	52752	42356	80.3
63	Natore	Lalpur	65222	53466	82.0	132	Moulavi Bazar	Kulaura	57171	45902	80.3
64	Kishoreganj	Bazitpur	44805	36726	82.0	133	Netrokona	Barhatta	33924	27221	80.2
65	Natore	Baraigram	67693	55447	81.9	134	Sherpur	Jhenaigat	36431	29209	80.2
66	Pabna	Santhia	89981	73686	81.9	135	Jhalakati	Kathalia	20837	16701	80.2
67	Lalmonirhat	Hatibandha	49906	40859	81.9	136	Magura	Magura Sadar	80593	64585	80.1
68	Lalmonirhat	Patgram	45359	37131	81.9	137	Barguna	Bmna	14509	11624	80.1
69	Kishoreganj	Tarail	30910	25292	81.8						

Sl. No.	Name of District	Name of Upazila	Total Couples	Total Acceptors	CAR (%)	Sl. No.	Name of District	Name of Upazila	Total Couples	Total Acceptors	CAR (%)
138	Feni	Dagonbhuiyan	49718	39831	80.1	209	Chandpur	Chandpur Sadar	71025	56051	78.9
139	Seraiganj	Kazipur	56725	45432	80.1	210	Shariatpur	Janjira	38421	30316	78.9
140	Khulna	Khulna Sadar	93906	75177	80.1	211	Cox's Bazar	Ukhiya	34360	27109	78.9
141	Jhalakati	Jhalakati Sadar	34920	27951	80.0	212	Kurigram	Roumari	43794	34538	78.9
142	Gaibandha	Shaghata	55783	44639	80.0	213	Nawabganj	Gomostapur	60229	47475	78.8
143	Nilphamari	Jaldhaka	75895	60731	80.0	214	Jessore	Jhikarghachha	67942	53549	78.8
144	Panchgarh	Atowari	29191	23358	80.0	215	Tangail	Ghatail	102069	80438	78.8
145	Kishoreganj	Mithamoin	23460	18753	79.9	216	Jamalpur	Bakshiganj	40355	31794	78.8
146	Jhenaidaha	Kotchandpur	33304	26590	79.8	217	Naogaon	Rani Nagar	42131	33179	78.8
147	Habiganj	Habiganj Sadar	58174	46425	79.8	218	Chittagong	Boalkhali	44135	34728	78.7
148	Barguna	Betagi	23268	18568	79.8	219	Cox's Bazar	Moheshkhali	53811	42335	78.7
149	Kurigram	Kurigram Sadar	73468	58627	79.8	220	Thakurgaon	Haripur	30437	23939	78.7
150	Thakurgaon	Pirganj	49436	39441	79.8	221	Chuadanga	Chuadanga Sadar	71447	56173	78.6
151	Lalmonirhat	Lalmonirhat Sadar	77359	61688	79.7	222	Pirojpur	Kawkhali	11847	9313	78.6
152	Jessore	Chowgachha	54985	43839	79.7	223	Jhenaidaha	Jhenaidaha Sadar	96566	75865	78.6
153	Lalmonirhat	Aditmari	47641	37963	79.7	224	Jamalpur	Islampur	66788	52469	78.6
154	Dinajpur	Ghoraghat	26055	20758	79.7	225	Faridpur	Char Bhadrashion	13288	10439	78.6
155	Faridpur	Alphadanga	22187	17672	79.7	226	Moulavi Bazar	Kamalganj	44590	35022	78.5
156	Khulna	Digholia	91790	73099	79.6	227	Dinajpur	Khanshama	40262	31607	78.5
157	Natore	Singra	85722	68262	79.6	228	Madaripur	Shibchar	58250	45712	78.5
158	Thakurgaon	Ranisankail	47403	37743	79.6	229	Moulavi Bazar	Rajnagar	39573	31055	78.5
159	Sherpur	Sherpur Sadar	115584	92028	79.6	230	Moulavi Bazar	Barlekha	41600	32617	78.4
160	Kustia	Daulatpur	111365	88667	79.6	231	Rangpur	Pirgachha	73194	57375	78.4
161	Rangamati	Naniarchar	8795	7002	79.6	232	Jamalpur	Madarganj	52582	41212	78.4
162	Jhalakati	Nalchhiti	35241	28053	79.6	233	Sunamganj	Bishwamvarpur	25333	19852	78.4
163	Manikganj	Manikganj Sadar	67826	53985	79.6	234	Sherpur	Nakla	41828	32760	78.3
164	Shariatpur	Goshairhat	29712	23639	79.6	235	Sunamganj	Dowara Bazar	37000	28974	78.3
165	Shariatpur	Palong (Sadar)	41874	33295	79.5	236	Mymensingh	Nandail	82820	64836	78.3
166	Naogaon	Badalgachhi	47993	38148	79.5	237	Netrokona	Purbadhala	56418	44161	78.3
167	Gazipur	Tongi	34122	27119	79.5	238	Kustia	Mirpur	76659	59986	78.3
168	Gopalganj	Kotalipara	44363	35258	79.5	239	Dinajpur	Kaharole	35204	27545	78.2
169	Dinajpur	Bochaganj	34225	27200	79.5	240	Satkhira	Kaliganj	63538	49708	78.2
170	Jhenaidaha	Moheshpur	74581	59259	79.5	241	Bhola	Lalmohan	61222	47895	78.2
171	Kustia	Kumarkhali	73567	58450	79.5	242	Sylhet	Biswanath	30714	24025	78.2
172	Gazipur	Kaliakair	62186	49405	79.4	243	Pabna	Bera	55477	43371	78.2
173	Kurigram	Bhurungamari	62321	49510	79.4	244	Chittagong	Panchlaish	30448	23801	78.2
174	Dhaka	Dhamrai	88787	70533	79.4	245	Madaripur	Kalkini	52306	40882	78.2
175	Faridpur	Faridpur Sadar	92293	73304	79.4	246	Gopalganj	Kasiani	44901	35080	78.1
176	Madaripur	Rajoir	46375	36832	79.4	247	Mymensingh	Dhubaura	40481	31616	78.1
177	Moulavi Bazar	Moulavi Bazar Sada	51991	41290	79.4	248	Khulna	Batiaghata	37318	29144	78.1
178	Naogaon	Atrai	46523	36947	79.4	249	Magura	Mohammadpur	39681	30989	78.1
179	Rangamati	Rangamati Sadar	19104	15168	79.4	250	Narayanganj	Bandar	63783	49795	78.1
180	Gaibandha	Gaibandha Sadar	100310	79601	79.4	251	Thakurgaon	Baliadangi	42387	33089	78.1
181	Faridpur	Boalmari	54355	43119	79.3	252	Rangamati	Jurachhari	4171	3256	78.1
182	Pabna	Pabna Sadar	130697	103662	79.3	253	Barguna	Patharghata	32122	25075	78.1
183	Panchgarh	Panchgarh Sadar	56881	45084	79.3	254	Manikganj	Daulatpur	37595	29346	78.1
184	Mymensingh	Muktagacha	92265	73111	79.2	255	Comilla	Barura	83716	65281	78.0
185	Mymensingh	Bhaluka	88877	70425	79.2	256	Bandarban	Bandarban Sadar	14514	11313	77.9
186	Dinajpur	Birganj	68845	54544	79.2	257	Comilla	Debidwar	90380	70442	77.9
187	Jamalpur	Jamalpur Sadar	135500	107310	79.2	258	Gopalganj	Tungipara	20312	15830	77.9
188	Gaibandha	Gobindaganj	118375	93739	79.2	259	Faridpur	Saltha	33099	25791	77.9
189	Naogaon	Sapahar	36612	28991	79.2	260	Rangamati	Baghaichhari	11541	8992	77.9
190	Seraiganj	Ullahpara	120589	95483	79.2	261	Gopalganj	Muksudpur	59428	46300	77.9
191	Seraiganj	Tarash	45500	36024	79.2	262	Manikganj	Harirampur	32792	25544	77.9
192	Rangpur	Kaunia	49458	39132	79.1	263	Shariatpur	Naria	40525	31567	77.9
193	Sunamganj	Tahirpur	33285	26335	79.1	264	Shariatpur	Bhedarganj	43118	33586	77.9
194	Dinajpur	Nawabganj	49312	39009	79.1	265	Khulna	Paikgachha	56520	44006	77.9
195	Narshingdi	Narshingdi Sadar	115544	91358	79.1	266	Netrokona	Mohonganj	31042	24168	77.9
196	Meherpur	Mujibnagar	23970	18951	79.1	267	Tangail	Gopalpur	58378	45446	77.8
197	Naogaon	Dhamoirhat	43176	34122	79.0	268	Tangail	Mirzapur	93727	72950	77.8
198	Rangamati	Chondraghona	10720	8469	79.0	269	Rangpur	Taraganj	33484	26060	77.8
199	Kishoreganj	Itna	33065	26120	79.0	270	Mymensingh	Fulbaria	84656	65882	77.8
200	Dinajpur	Fulbari	36570	28885	79.0	271	Tangail	Bhuapur	42706	33230	77.8
201	Jamalpur	Dewanganj	58746	46394	79.0	272	Mymensingh	Haluaghat	66371	51644	77.8
202	Moulavi Bazar	Sreemongal	61264	48381	79.0	273	Bandarban	Naikhongchhari	10968	8533	77.8
203	Cox's Bazar	Chakaria	77663	61321	79.0	274	Panchgarh	Tetulia	27426	21327	77.8
204	Naogaon	Mohadebpur	69138	54588	79.0	275	Mymensingh	Mymensingh Sadar	134201	104337	77.7
205	Tangail	Tangail Sadar	118213	93334	79.0	276	Rangamati	Rajasthali	4621	3592	77.7
206	Feni	Sonagazi	52109	41139	78.9	277	Bhola	Bhola Sadar	83806	65134	77.7
207	Gaibandha	Fulchhari	36193	28573	78.9	278	Comilla	Brahmanpara	39205	30463	77.7
208	Faridpur	Modhukhali	43498	34329	78.9	279	Kustia	Kushtia Sadar	116500	90510	77.7

Sl. No.	Name of District	Name of Upazila	Total Couples	Total Acceptors	CAR (%)	Sl. No.	Name of District	Name of Upazila	Total Couples	Total Acceptors	CAR (%)
280	Sylhet	Jaintapur	26862	20860	77.7	351	Mymensingh	Ishwarganj	78429	59679	76.1
281	Pabna	Ishwardi	70618	54821	77.6	352	Narayanganj	Rupganj	89468	68074	76.1
282	Narshingdi	Shibpur	53477	41502	77.6	353	Khulna	Rupsha	37039	28173	76.1
283	Satkhira	Kolaroa	52465	40704	77.6	354	Noakhali	Begumganj	103432	78659	76.0
284	Kustia	Bheramara	49827	38641	77.6	355	Barisal	Mehendiganj	55483	42185	76.0
285	Khulna	Terokhada	25199	19541	77.5	356	Pabna	Chatmohor	71201	54124	76.0
286	Jessore	Abhaynagar	56765	43985	77.5	357	Comilla	Monohargonj	46845	35596	76.0
287	Bandarban	Rowangchhari	4610	3568	77.4	358	Bagerhat	Mollahat	26637	20228	75.9
288	Pirojpur	Nazirpur	31927	24708	77.4	359	Chittagong	Rangunia	74462	56541	75.9
289	Sunamganj	Sunamganj	27590	21339	77.3	360	Narshingdi	Palash	40767	30947	75.9
290	Khulna	Dacope	30798	23816	77.3	361	Comilla	Chandina	73994	56165	75.9
291	Sunamganj	Jogonathpur	32710	25294	77.3	362	Munshiganj	Gazaria	30550	23186	75.9
292	Bandarban	Alikadam	9090	7028	77.3	363	Bhola	Daulatkhan	33174	25172	75.9
293	Gazipur	Sreepur	97792	75575	77.3	364	Narshingdi	Monohordi	56183	42608	75.8
294	Patuakhali	Mirzaganj	24254	18742	77.3	365	Satkhira	Satkhira Sadar	92579	70204	75.8
295	Sylhet	Jakiganj	33844	26147	77.3	366	Netrokona	Kalmakanda	48821	37020	75.8
296	Jhenaidaha	Sailkupa	82257	63544	77.3	367	Barisal	Gournadi	35784	27094	75.7
297	Rangpur	Gangachara	66068	50998	77.2	368	Chandpur	Sharasti	46784	35417	75.7
298	Khulna	Koyra	40083	30940	77.2	369	Narayanganj	Araihazar	76573	57907	75.6
299	Chandpur	Hemchar	18814	14520	77.2	370	Tangail	Basail	38002	28737	75.6
300	Narayanganj	Narayanganj Sadar	192594	148636	77.2	371	Barisal	Hizla	24748	18704	75.6
301	Gazipur	Kapasia	69214	53385	77.1	372	Mymensingh	Phulpur	121850	92075	75.6
302	Comilla	Meghna	21438	16529	77.1	373	Cox's Bazar	Kutubdia	22058	16663	75.5
303	Rajbari	Pangsha	87827	67683	77.1	374	Bagerhat	Chitalmari	26928	20337	75.5
304	Comilla	Comilla Sadar South	80018	61663	77.1	375	Brahmanbaria	Brahmanbaria Sadar	88079	66509	75.5
305	Mymensingh	Trisal	86911	66913	77.0	376	Barisal	Bakerganj	63760	48111	75.5
306	Netrokona	Modan	26238	20198	77.0	377	Narshingdi	Belaboo	40016	30180	75.4
307	Comilla	Daudkandi	69567	53552	77.0	378	Rajbari	Baliakandi	43670	32900	75.3
308	Khagrachhari	Khagrachhari Sadar	17848	13734	76.9	379	Bandarban	Ruma	4289	3229	75.3
309	Jhenaidaha	Kaliganj	63498	48848	76.9	380	Bhola	Tajumuddin	24379	18352	75.3
310	Moulavi Bazar	Juri	23726	18250	76.9	381	Bhola	Borhanuddin	48718	36671	75.3
311	Comilla	Titash	36185	27827	76.9	382	Pirojpur	Zianagar	14188	10674	75.2
312	Brahmanbaria	Ashuganj	27069	20811	76.9	383	Bandarban	Lama	17512	13174	75.2
313	Jhenaidaha	Harinakunda	44077	33883	76.9	384	Comilla	Nangolkot	73766	55477	75.2
314	Netrokona	Atpara	29234	22472	76.9	385	Serajganj	Belkuchi	66486	49994	75.2
315	Rangpur	Rangpur Sadar	140187	107703	76.8	386	Habiganj	Madhabpur	61084	45928	75.2
316	Comilla	Muradnagar	108424	83289	76.8	387	Lakshmipur	Kamalnagar	35193	26458	75.2
317	Jessore	Sarsa	78414	60209	76.8	388	Mymensingh	Gouripur	63125	47413	75.1
318	Netrokona	Kendua	57753	44338	76.8	389	Khagrachhari	Ramgarh	11721	8802	75.1
319	Chittagong	Lohagora	55884	42897	76.8	390	Kurigram	Char Rajibpur	21350	16026	75.1
320	Comilla	Comilla Sadar	85531	65640	76.7	391	Habiganj	Bahubal	32970	24745	75.1
321	Khagrachhari	Dighinala	16626	12754	76.7	392	Barisal	Muladi	31054	23275	75.0
322	Netrokona	Durgapur	45247	34708	76.7	393	Sylhet	South Shurma	48209	36127	74.9
323	Pabna	Bhangoora	28858	22130	76.7	394	Pirojpur	Mathbaria	47137	35322	74.9
324	Rangamati	Langadu	16223	12438	76.7	395	Dhaka	Tejgaon	174648	130849	74.9
325	Patuakhali	Patuakhali Sadar	68104	52212	76.7	396	Sylhet	Companiganj	25668	19220	74.9
326	Chandpur	Hajiganj	61052	46797	76.7	397	Barguna	Barguna Sadar	60341	45179	74.9
327	Kurigram	Ulipur	101107	77490	76.6	398	Kurigram	Rajarhat	47217	35342	74.9
328	Chandpur	Faridganj	81224	62251	76.6	399	Barisal	Barisal Sadar	81764	61187	74.8
329	Jhalakati	Rajapur	23854	18271	76.6	400	Noakhali	Sonaimuri	60743	45446	74.8
330	Comilla	Laksham	54014	41351	76.6	401	Pabna	Atghoria	33895	25355	74.8
331	Pirojpur	Nesarabad	36314	27797	76.5	402	Brahmanbaria	Bancharampur	56047	41922	74.8
332	Sylhet	Golapganj	45056	34484	76.5	403	Rangamati	Belaichhari	4627	3460	74.8
333	Barguna	Amtali	64975	49714	76.5	404	Noakhali	Sudharam (Sadar)	86182	64399	74.7
334	Rangpur	Badarganj	65554	50133	76.5	405	Serajganj	Kamarkandi	27938	20863	74.7
335	Sunamganj	Chhatak	51240	39183	76.5	406	Dhaka	Mirpur	90933	67861	74.6
336	Chandpur	Motlab (North)	57014	43579	76.4	407	Bhola	Charfashion	87783	65463	74.6
337	Cox's Bazar	Ramu	42747	32667	76.4	408	Feni	Fulgazi	22504	16771	74.5
338	Habiganj	Chunarughat	58920	45010	76.4	409	Pirojpur	Pirojpur Sadar	26799	19955	74.5
339	Pirojpur	Bhandaria	24446	18672	76.4	410	Chittagong	Rawzan	60514	45059	74.5
340	Pabna	Sujanagar	60861	46452	76.3	411	Sunamganj	Dharmapasa	41352	30789	74.5
341	Sylhet	Gowainghat	48761	37204	76.3	412	Tangail	Nagarpur	65754	48930	74.4
342	Sunamganj	Sulla	19006	14485	76.2	413	Brahmanbaria	Kashba	64077	47678	74.4
343	Rangpur	Mithapukur	117350	89421	76.2	414	Serajganj	Shazadpur	113195	84225	74.4
344	Comilla	Homna	38830	29576	76.2	415	Chandpur	Matlab (South)	42244	31426	74.4
345	Barisal	Uzirpur	45945	34993	76.2	416	Sylhet	Fenchuganj	16955	12601	74.3
346	Kustia	Khoksa	30410	23159	76.2	417	Narayanganj	Sonargaon	76799	57060	74.3
347	Comilla	Chouddagram	84943	64682	76.1	418	Barisal	Agailjhara	28619	21256	74.3
348	Sunamganj	Dherai	39035	29712	76.1	419	Barisal	Babuganj	27404	20351	74.3
349	Munshiganj	Srinagar	51713	39361	76.1	420	Lakshmipur	Lakshmipur Sadar	128128	95135	74.3
350	Netrokona	Netrokona Sadar	59688	45422	76.1	421	Feni	Parshuram	19106	14184	74.2

Sl. No.	Name of District	Name of Upazila	Total Couples	Total Acceptors	CAR (%)	Sl. No.	Name of District	Name of Upazila	Total Couples	Total Acceptors	CAR (%)
422	Dhaka	Savar	176422	130967	74.2	453	Brahmanbaria	Sarail	51516	37378	72.6
423	Chittagong	Doublemooring	44963	33341	74.2	454	Chandpur	Kachua	77764	56355	72.5
424	Lakshmipur	Raipur	54083	40103	74.2	455	Chittagong	Banshkhali	80105	58022	72.4
425	Tangail	Modhupur	112644	83466	74.1	456	Rangamati	Barkal	7017	5082	72.4
426	Munshiganj	Serajdikhan	54215	40158	74.1	457	Chittagong	Chandlaish	42579	30790	72.3
427	Mymensingh	Gafargaon	85545	63362	74.1	458	Brahmanbaria	Nasirnagar	55089	39813	72.3
428	Chittagong	Satkania	66483	49230	74.0	459	Tangail	Delduar	46558	33628	72.2
429	Brahmanbaria	Bijoy Nagar	46564	34452	74.0	460	Habiganj	Azmiriganj	19651	14193	72.2
430	Rajbari	Goalunda Ghat	24557	18145	73.9	461	Bhola	Monpura	15397	11119	72.2
431	Noakhali	Senbag	51460	37976	73.8	462	Khagrachhari	Lakshmichhari	5384	3882	72.1
432	Barisal	Banaripara	28518	21025	73.7	463	Munshiganj	Lohajong	30177	21742	72.0
433	Dhaka	Keraniganj	138574	102163	73.7	464	Sylhet	Kanaighat	47380	34117	72.0
434	Gazipur	Kaliganj	51560	37934	73.6	465	Cox's Bazar	Coxs Bazar Sadar	75669	54475	72.0
435	Narshingdi	Raipura	104926	77196	73.6	466	Noakhali	Hatiya	63083	45349	71.9
436	Sylhet	Sylhet Sadar	86439	63562	73.5	467	Munshiganj	Munshiganj Sadar	75757	54440	71.9
437	Brahmanbaria	Akhaura	28721	21110	73.5	468	Faridpur	Sadarpur	33923	24347	71.8
438	Khagrachhari	Panchhari	10385	7631	73.5	469	Bandarban	Thanchi	3677	2639	71.8
439	Munshiganj	Tongibari	36503	26808	73.4	470	Lakshmipur	Ramganj	58210	41726	71.7
440	Sunamganj	Sadar (South)	27193	19970	73.4	471	Chittagong	Anwara	45081	32251	71.5
441	Habiganj	Nabiganj	57441	42179	73.4	472	Feni	Chhagalnaiya	35227	25201	71.5
442	Sylhet	Balaganj	49283	36147	73.3	473	Brahmanbaria	Nabinagar	88360	63151	71.5
443	Rangamati	Kawkhali	11003	8065	73.3	474	Chittagong	Sitakunda	70756	50439	71.3
444	Lakshmipur	Ramgoti	40796	29900	73.3	475	Chittagong	Sandwip	54040	38492	71.2
445	Feni	Feni Sadar	86152	63126	73.3	476	Tangail	Shakhipur	69832	49709	71.2
446	Serajganj	Chouhali	19168	14044	73.3	477	Chittagong	Patiya	94890	67533	71.2
447	Chittagong	Hathazari	71174	52123	73.2	478	Manikganj	Singair	61424	43403	70.7
448	Noakhali	Subarna Char	40175	29406	73.2	479	Noakhali	Companiganj	46471	32827	70.6
449	Chittagong	Fatichhari	98766	72030	72.9	480	Sylhet	Biani Bazar	34600	24420	70.6
450	Cox's Bazar	Teknaf	45046	32843	72.9	481	Noakhali	Chatkhil	44204	31182	70.5
451	Khagrachhari	Mahalchhari	8773	6393	72.9	482	Chittagong	Mirsharai	78646	55150	70.1
452	Noakhali	Kabirhat	29715	21587	72.6	483	Habiganj	Lakhai	27415	19093	69.6

Table :16
List of Upazila achieved CAR 60-69% & upto the end of August 2014

Sl. No.	Name of District	Name of Upazila	Total Couples	Total Acceptors	CAR (%)
1	Khagrachhari	Manikchhari	10337	7102	68.7
2	Dhaka	Nowabganj	71490	47562	66.5
3	Habiganj	Baniachhong	55709	36753	66.0
4	Cox's Bazar	Pekua	29026	18948	65.3

Table :17
List of Upazila achieved CAR 0 to 59% upto the end of August 2014

Sl. No.	Name of District	Name of Upazila	Total Couples	Total Acceptors	CAR (%)
1	Dhaka	Dohar	45445	25085	55.2

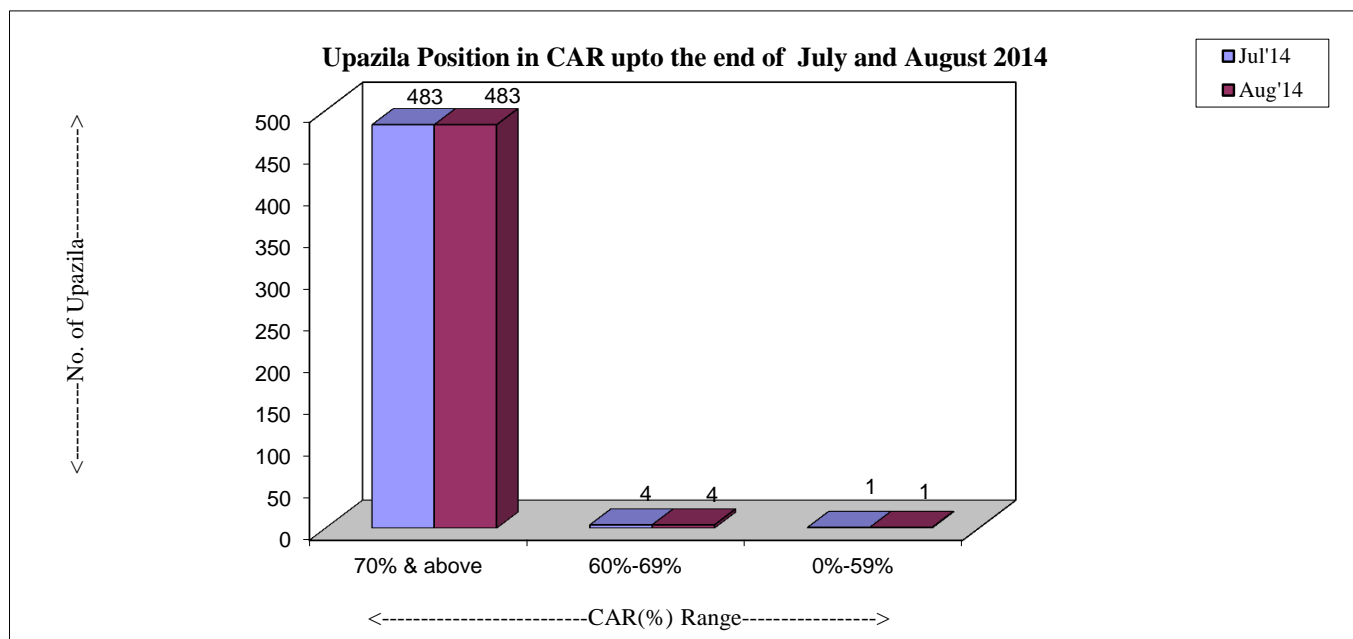


Table :18**Method wise Number of Dropout and Switch Over by Division upto the end of August 2014**

Division	Number of Acceptors droppedout and Switch Over									
	Oral Pill		Condom		Injectable		IUD		Implant	
	No Method	Switch Over	No Method	Switch Over	No Method	Switch Over	No Method	Switch Over	No Method	Switch Over
Rajshahi	24732	17222	7339	5722	11312	11094	1499	1222	2014	2266
Khulna	9624	6818	3371	2859	5029	4435	703	499	914	924
Barisal	5495	3278	1505	800	3492	2162	599	281	649	426
Dhaka	23811	13828	8199	5530	9919	7729	2251	1376	2068	1530
Chittagong	12027	6099	4394	2367	6724	3781	1251	520	937	552
Sylhet	5246	2503	2075	1112	2532	1256	555	242	442	226
National	80935	49748	26883	18390	39008	30457	6858	4140	7024	5924

Table :19**Contraceptive Acceptors and Acceptance Rate by Division up to the end of July and August 2014**

Division	Month	Total Eligible Couple	Total Number of Acceptors							CAR (%)
			Permanent Method	IUD	Implant	Injectable	Oral Pill	Condom	Total	
Rajshahi	Jul'14	7640320	969491	166606	227226	1246116	3084246	452567	6146252	80.4
	Aug'14	7648853	971002	165922	228495	1249342	3084795	453317	6152873	80.4
Khulna	Jul'14	3456002	442890	87906	106084	572609	1295689	252713	2757891	79.8
	Aug'14	3462709	444787	87977	106816	574429	1296894	253979	2764882	79.8
Barisal	Jul'14	1612270	135667	50988	67184	356897	558410	71761	1240907	77.0
	Aug'14	1614061	136059	51013	67494	357467	558513	71725	1242271	77.0
Dhaka	Jul'14	7586006	743942	223373	228637	1029796	3106317	554603	5886668	77.6
	Aug'14	7598376	747648	222350	230339	1029716	3108670	555929	5894652	77.6
Chittagong	Jul'14	4769182	407877	165924	124832	828686	1727472	317910	3572701	74.9
	Aug'14	4777126	409676	166300	126129	830350	1729806	318336	3580597	75.0
Sylhet	Jul'14	1556255	182675	63607	41912	201994	564274	126798	1181260	75.9
	Aug'14	1559080	184071	63630	42573	202648	565202	126917	1185041	76.0
National	Jul'14	26620035	2882542	758404	795875	4236098	10336408	1776352	20785679	78.1
	Aug'14	26660205	2893243	757192	801846	4243952	10343880	1780203	20820316	78.1

Table :20**Status of Contraceptive Method-Mix based on CAR at the end of the Month of August 2014**

Method	Rajshahi	Khulna	Barisal	Dhaka	Chittagong	Sylhet	National
Permanent Method	15.8	16.1	11.0	12.7	11.4	15.5	13.9
I U D	2.7	3.2	4.1	3.8	4.6	5.4	3.6
Implant	3.7	3.9	5.4	3.9	3.5	3.6	3.9
Injectables	20.3	20.8	28.8	17.5	23.2	17.1	20.4
Oral Pill	50.1	46.9	45.0	52.7	48.3	47.7	49.7
Condom	7.4	9.2	5.8	9.4	8.9	10.7	8.6
Total	100.0	100.0	100.0	100.0	100.0	100.0	100.0

Method-Mix for the month of August 2014

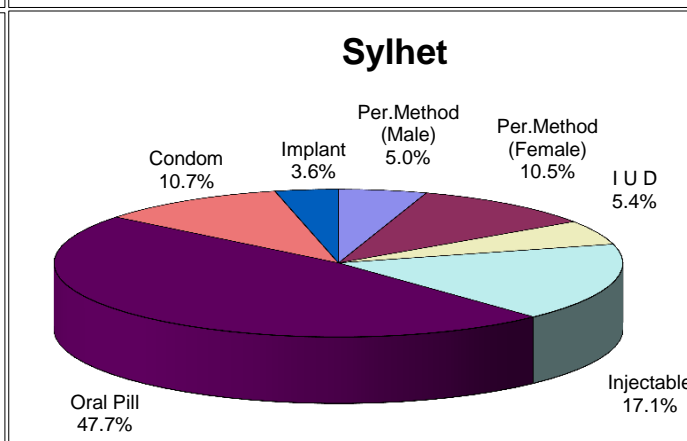
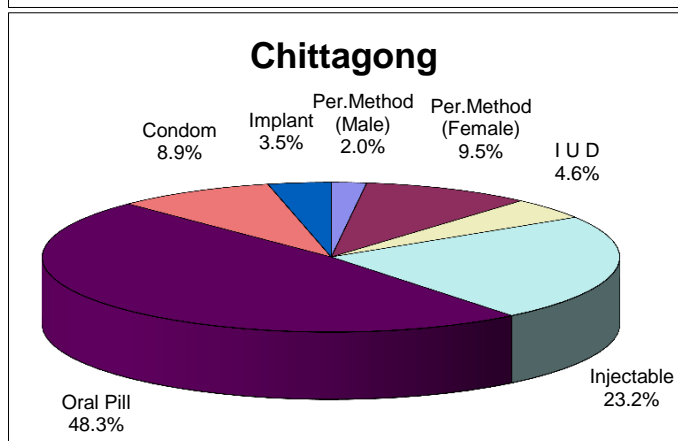
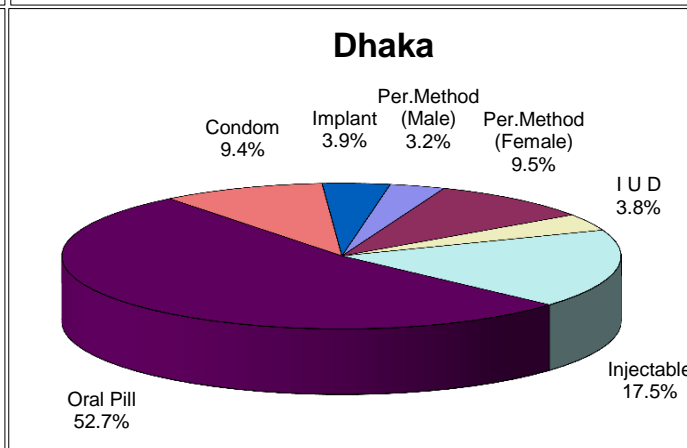
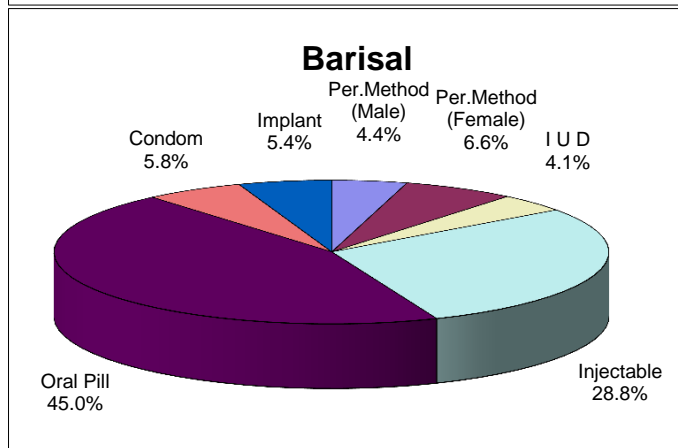
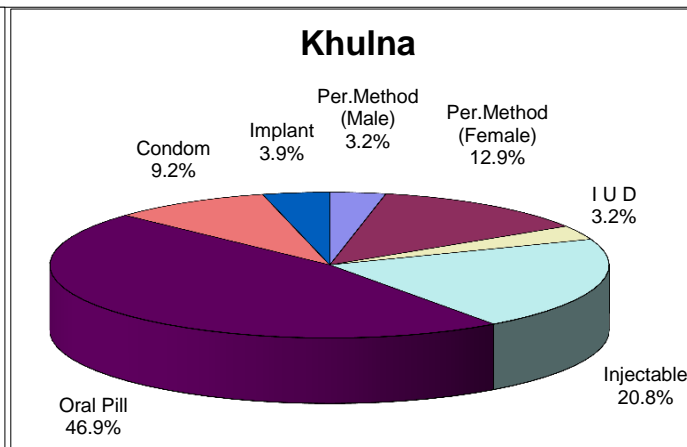
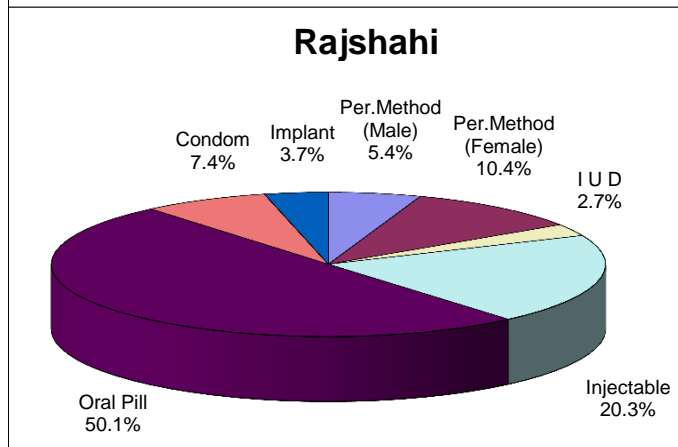
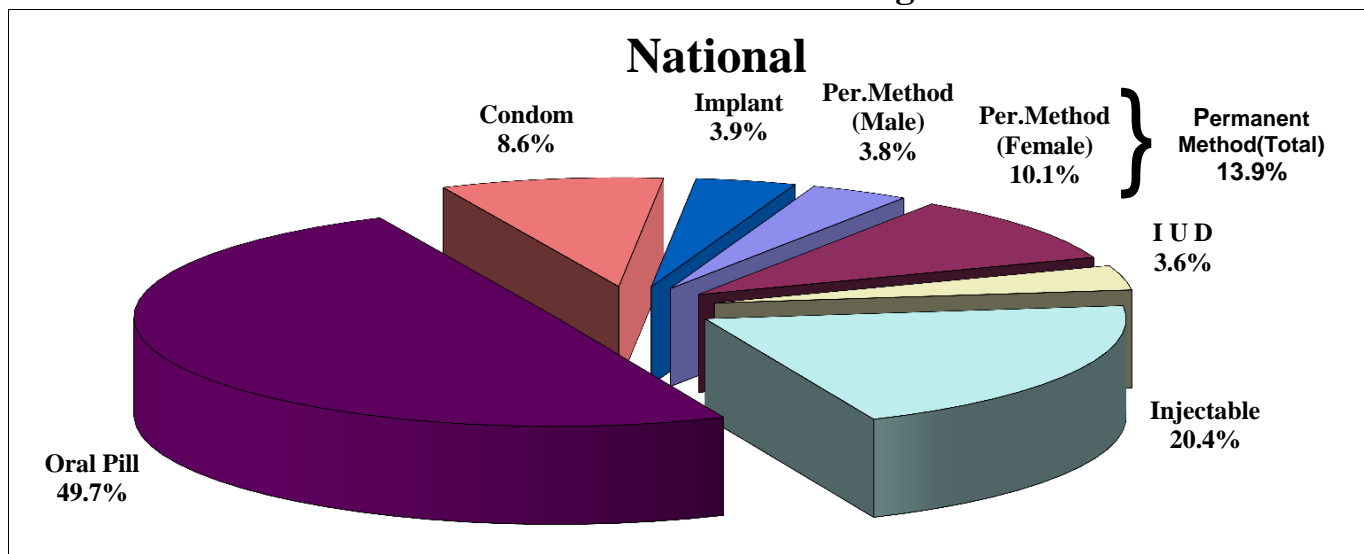


Table :21**Performance by type of MCH services for the month of July and August 2014**

(In Number)

Services	Performance		% Change of Aug'14 over Jul'14
	Jul'14	Aug'14	
Number of Pregnant Women (Registered by FWA)	830589	852262	2.6
Referred High Risk Pregnant Mother	13019	12685	-2.6
Antenatal Care			
1st visit	158444	188643	19.1
2nd visit	115792	125464	8.4
3rd or more visit (Including MCHTI, MFSTC & FWVTI)	116408	128411	10.3
Delivery (conducted in MCHTI, MFSTC, FWVTI, MCWC, UHC, FWC) *	28876	30680	6.2
Caesarian Operations (MCHTI, MFSTC, FWVTI, MCWC, FP & NGO Clinics)	4272	4934	15.5
Postnatal Care (MCHTI, MFSTC, FWVTI, MCWC, UHC, FWC)	122406	131482	7.4
Referred for RTI/STI (Adolescent Boys)	7830	10725	37.0
Referred for RTI/STI (Adolescent Girls)	12249	10843	-11.5
Treatment of RTI/STI (MCHTI & MCWCs)	3115	3930	26.2
TT for Women (15 - 49 Yrs.)			
1st dose	114001	121190	6.3
2nd dose	113982	120080	5.3
3rd dose	110784	117868	6.4
4th dose	103872	110356	6.2
5th dose	99599	108186	8.6
Total TT	542238	577680	6.5
Immunization			
DPT 1st dose	151433	158391	4.6
DPT 2nd dose	152357	157598	3.4
DPT 3rd dose	152673	156664	2.6
BCG (Vaccine)	142691	150486	5.5
Measles (Vaccine)	177560	190106	7.1
Child Care (Including MCHTI & MFSTC)			
0 - <1Yr.	252017	272755	8.2
1 - 5Yrs	513509	559979	9.0
Total Child Care	765526	832734	8.8
General Treatment	2625918	2863879	9.1
Number of ECP acceptors	786	545	-30.7
Number of MR done (Both Govt. & NGOs)	14063	18238	29.7
Births			
Live Births (Home) by Trained Persons (collected by FWA)	58161	62962	8.3
Live Births (Home) by Non-trained Persons (collected by FWA)	14772	16807	13.8
Live Births (Clinic) (collected by FWA, conducted in MCH, DH, MCWC, UHC, FWC, NGO & Private clinic)	33437	37374	11.8
Total Births	106370	117143	10.1
Still Births (Including MCHTI)	240	320	33.3
Deaths			
Neonatal Deaths (0 - 28 days)	602	851	41.4
Infant Death (29 days - 1Yer)	203	262	29.1
Child Death (1 - 5Yrs.)	354	481	35.9
Maternal Deaths	73	78	6.8
Other Deaths	23364	23777	1.8
Total Deaths	24596	25449	3.5

* See Page - 10 for clarification

Annex - A

Summary of the Couples and Acceptors by Month since March 2014

Indicators	Mar'14	Apr'14	May'14	Jun'14	Jul'14	Aug'14
Number of Total Couples	26525199	26561275	26557255	26598869	26620035	26660205
Number of Total Acceptors	20617810	20663873	20666352	20774103	20785679	20820316
Method Specific Acceptors						
Permanent Method (Male)	779721	783386	786162	789512	791001	793828
Permanent Method (Female)	2067165	2074658	2079328	2087021	2091541	2099415
Permanent Method (Total)	2846886	2858044	2865490	2876533	2882542	2893243
IUD (Users)	745588	746954	747592	758288	758404	757192
Implant (Users)	766301	777256	781184	794138	795875	801846
Injectable (Users)	4190338	4201418	4208070	4233839	4236098	4243952
Oral Pill (Acceptors)	10314935	10323953	10310018	10334503	10336408	10343880
Condom (Acceptors)	1753762	1756248	1753998	1776802	1776352	1780203
CAR (Contraceptive Acceptance Rate)	77.7	77.8	77.8	78.1	78.1	78.1
Number of Districts reported	64	64	64	64	64	64
Number of Upazilas reported	488	488	488	488	488	488

Method Specific absolute performance by month since March 2014

Indicators	Mar'14	Apr'14	May'14	Jun'14	Jul'14	Aug'14
Permanent Method (Male, Cases)	7894	7521	5637	7696	5618	8095
Permanent Method (Female, Cases)	10030	9099	6947	10495	5689	10696
Permanent Method (Total, Cases)	17924	16620	12584	18191	11307	18791
I U D (in cases)	18705	18781	16381	32718	11652	16699
Implant (Cases)	32437	32488	19609	33881	10080	25757
Injectables (Doses)	1161880	1184646	1106441	1192964	1074843	1174466
Oral Pill (Cycles)	8942210	9284123	8787916	8782704	8793616	8854425
Condom (Pieces)	12396201	12711360	12221332	12209938	11761529	12314479

Performance by types of MCH services by month since March 2014

Services	Mar'14	Apr'14	May'14	Jun'14	Jul'14	Aug'14
Number of Pregnant Women (Registered by FWA)	781414	809991	808872	821252	830589	852262
Referred High Risk Pregnant Mother	13059	12523	12702	12994	13019	12685
Antenatal Care (Including MCHTI)						
1st visit	172211	173590	164714	180886	158444	188643
2nd visit	122271	120136	120463	122672	115792	125464
3rd or more visit	114905	115870	117638	120355	116408	128411
• Delivery (conducted in MCHTI, MFSTC, FWVTI, MCWC, UHC, FWC) *	28715	26908	27530	32288	28876	30680
• Caesarian Operations (MCHTI, MCWC, FP & NGO Clinics)	4883	4043	4084	4367	4272	4934
• Postnatal Care (MCHTI, MFSTC, MCWC, UHC, FWC)	129020	124343	125113	128305	122406	131482
Referred for RTI/STI (Boys)	9278	8322	7286	8198	7830	10725
Referred for RTI/STI (Girls)	10696	11239	10762	11298	12249	10843
Treatment of RTI/STI (MCHTI & MCWCs)	3097	3870	3223	3193	3115	3930

Services	Mar'14	Apr'14	May'14	Jun'14	Jul'14	Aug'14
TT for Women (15 - 49 Yrs.)						
1st dose	123848	123914	120977	118899	114001	121190
2nd dose	122066	122833	118918	120388	113982	120080
3rd dose	116496	115704	117547	116362	110784	117868
4th dose	109542	108656	107901	110131	103872	110356
5th dose	106722	105261	103908	105472	99599	108186
Total TT	578674	576368	569251	571252	542238	577680
Immunization						
DPT 1st dose	157638	159383	154235	162482	151433	158391
DPT 2nd dose	161510	160012	158571	157313	152357	157598
DPT 3rd dose	160638	161106	159224	157313	152673	156664
BCG (Vaccine)	142932	141614	141455	143721	142691	150486
Measles (Vaccine)	179658	181249	181384	180123	177560	190106
Child Care (Including MCHTI & MFSTC)						
0 - <1Yr.	283836	273649	255971	283338	252017	272755
1 - 5Yrs	579272	563429	501965	561473	513509	559979
Total Child Care	863108	837078	757936	844811	765526	832734
General Treatment	2848188	2779764	2502677	2791463	2625918	2863879
Number of ECP acceptors	779	1966	2085	2323	786	545
Number of MR done (Both Govt. & NGOs)	21018	21144	18662	19825	14063	18238
Births						
● Live Births (Home) by Trained Persons (collected by FWA)	66101	63395	61868	59733	58161	62962
● Live Births (Home) by Non-trained Persons (collected by FWA)	16509	15930	16059	15170	14772	16807
● Live Births (Clinic) (collected by FWA, conducted in MCH, DH, MCWC, UHC, FWC, NGO & Private clinic)	33861	31870	33457	32972	33437	37374
Total Births	116471	111195	111384	107875	106370	117143
Still Births (Including MCHTI)	247	281	296	252	240	320
Deaths						
Neonatal Deaths (0 - 28 days)	912	794	675	845	602	851
Infant Death (29 days - 1Yer)	274	241	230	221	203	262
Child Death (1 - 5Yrs.)	339	331	335	386	354	481
Maternal Deaths	61	75	72	80	73	78
Other Deaths	25190	24072	22611	22706	23364	23777
Total Deaths	26776	25513	23923	24238	24596	25449

* See Page - 10 for clarification

Annex - B

Performance of RH-EOC of MCWCs, MCHTI & MFSTC for the month of August 2014

SL #	Name of MCWC	Status	ANC (1st visit)	ANC (total)	PNC	Delivery (total)	C-section	Gen. Pt	RTI/STI	Med. tr	Child Care		S.B	IUD	MR	Immunization	Tubectomy	NSV	Implant	IUD	Injectable	Oral pill (person)	Condom (person)
											0-1yr	1-5yr											
Rajshahi Division																							
1	Bogra	C- EOC	384	625	104	37	8	661	19	0	113	210	0	0	0	775	3	3	26	1	63	27	5
2	Dupchacia, Bogra	B-EOC	71	95	40	37	0	858	32	0	61	143	0	0	2	17	9	9	59	1	21	18	6
3	Naogaon	C-EOC	223	372	27	23	0	589	24	7	91	150	0	0	2	178	55	3	65	0	3	19	44
4	Joypurhat	C- EOC	213	371	27	21	0	1636	43	0	158	338	0	0	12	728	72	0	151	10	112	92	53
5	Rajshahi	C- EOC	387	820	119	66	15	989	0	4	95	202	0	0	2	0	4	0	8	0	28	16	0
6	Natore	C- EOC	271	463	108	101	9	599	108	10	41	602	1	0	41	591	52	2	40	23	12	74	85
7	Pabna	C- EOC	479	939	264	197	27	754	236	3	310	325	1	0	18	193	14	8	7	14	144	105	94
8	Sirajganj	C- EOC	408	589	124	62	0	760	247	0	113	301	0	0	26	0	16	0	10	1	56	117	112
9	Chapai-Nawabganj	C- EOC	296	667	84	62	6	463	37	4	111	200	0	0	12	0	72	22	19	15	224	137	69
Rangpur Division																							
10	Rangpur	C- EOC	310	623	190	51	31	465	253	0	164	102	0	0	10	0	5	58	95	25	447	125	25
11	Dinajpur	C- EOC	276	732	152	41	6	588	120	4	124	168	0	0	5	537	53	0	6	6	71	50	117
12	Thakurgaon	C- EOC	442	459	233	75	26	837	14	3	167	220	0	0	22	168	16	12	60	6	164	52	28
13	Gaibandha	C-EOC	491	750	309	248	21	715	210	29	358	243	0	5	18	0	53	30	242	9	13	32	14
14	Nilphamari	C- EOC	291	509	110	66	6	919	63	11	62	290	0	2	46	0	15	34	69	0	126	125	34
15	Syedpur, Nilphamari	C- EOC	176	276	58	63	0	536	10	8	28	186	0	0	11	0	16	0	51	12	235	217	16
16	Kurigram	C-EOC	242	434	90	63	13	465	45	12	73	94	0	0	7	202	3	2	36	1	88	143	15
17	Lalmonirhat	C- EOC	241	526	112	42	0	716	65	12	185	350	0	0	4	325	6	9	176	2	109	21	21
18	Panchagore	C-EOC	120	267	176	63	1	647	6	0	87	179	0	0	10	262	17	59	127	12	89	4	12
19	Boda, Panchagar	C-EOC	100	180	55	58	16	303	30	27	40	120	2	0	13	0	4	23	21	5	142	26	8
Dhaka Division																							
20	Narayanganj	C- EOC	239	641	43	25	0	429	36	0	156	174	0	0	0	0	0	2	15	7	259	141	68
21	Munshiganj	C- EOC	245	523	45	27	1	360	6	2	38	131	0	0	10	135	40	0	4	5	187	81	39
22	Manikganj	C- EOC	606	978	262	85	36	537	27	16	469	155	0	0	93	439	5	99	85	3	96	157	12
23	Narsingdi	C-EOC	540	910	350	75	55	960	55	6	250	270	0	0	5	368	11	0	28	5	196	208	28
24	Tangail	C-EOC	301	413	113	73	30	1192	85	0	50	260	0	0	7	580	73	0	57	0	143	86	30
25	Sherpur	C-EOC	335	497	60	53	2	608	32	0	156	255	0	0	19	0	19	11	68	1	34	102	54
26	Mymensingh	C-EOC	323	733	305	111	20	1287	69	0	305	510	0	4	23	180	6	69	96	22	59	20	
27	Kishoreganj	C- EOC	336	426	169	59	18	574	46	1	98	251	0	1	12	83	58	6	64	3	134	387	182
28	Jamalpur	C- EOC	210	334	66	46	0	570	18	3	104	240	0	0	18	307	20	28	118	2	129	198	772
29	Netrokona	C-EOC	485	705	98	41	20	623	5	4	320	400	2	0	13	614	32	6	98	1	112	156	65
30	Rajbari	C- EOC	361	484	90	55	17	621	89	8	77	185	0	0	15	387	14	16	124	15	12	56	26
31	Faridpur	C- EOC	182	279	97	45	8	445	104	0	152	408	0	0	32	224	5	0	55	17	233	399	44
32	Madaripur	C- EOC	280	420	87	41	14	1380	30	2	92	277	0	0	8	0	12	1	10	3	316	337	39
33	Gopalganj	C- EOC	59	111	12	7	0	373	13	0	47	155	0	0	11	0	45	0	41	1	34	164	29
Khulna Division																							
34	Jessore	C- EOC	182	409	95	50	21	713	53	8	144	92	0	0	12	321	51	7	52	9	47	49	51
35	Magura	C- EOC	230	279	65	36	0	941	42	3	103	172	0	2	29	0	4	0	131	5	137	120	23
36	Narail	C-EOC	260	359	47	37	12	1270	0	3	164	293	0	0	0	230	16	2	50	2	21	38	36

SL #	Name of MCWC	Status	ANC (1st visit)	ANC (total)	PNC	Delivery (total)	C-section	Gen. Pt	RTI/STI	Med. tr	Child Care		S.B	IUFD	MR	Immunization	Tubecotomy	NSV	Implant	IUD	Injectable	Oral pill (person)	Condom (person)
											0-1yr	1-5yr											
37	Jhenaidah	C-EOC	350	618	181	60	4	1734	189	18	292	447	0	0	54	149	12	1	125	60	244	402	140
38	Meherpur	C- EOC	75	152	46	18	0	530	14	13	95	157	0	0	11	180	53	0	25	1	16	22	25
39	Chuadanga	C-EOC	334	599	37	64	10	824	19	18	75	155	0	0	5	172	62	1	73	7	111	47	34
40	Khulna	C-EOC	308	669	0	56	24	619	22	1	258	57	0	0	0	370	14	7	12	45	42	109	129
41	Bagerhat	C-EOC	127	184	60	66	18	786	58	6	848	1044	0	0	16	419	14	2	57	2	90	44.6667	2.25
42	Satkhira	C- EOC	339	663	132	54	38	1328	138	7	139	494	0	0	17	162	18	4	79	4	138	138	116
43	Nalta,Kaliganj, Satkhira	B-EOC	112	198	56	33	0	688	0	0	62	181	0	0	10	0	20	0	41	3	16	17	10
44	Kustia	C-EOC	207	391	110	31	3	598	59	14	100	161	0	0	9	160	4	2	29	7	37	33	28
45	Kumarkhali, Kustia	C- EOC	112	144	27	32	0	280	24	6	69	127	0	0	8	195	19	5	47	18	10	70	35
Barisal Division																							
46	Barisal	C-EOC	175	318	38	22	9	604	80	86	99	164	0	0	0	244	5	5	20	6	72	119	6
47	Gournadi, Barisal	C-EOC	21	36	12	5	0	427	9	0	20	107	0	0	7	20	20	2	38	3	83	16	2
48	Bhola	C-EOC	87	157	61	63	8	500	17	0	75	180	0	0	0	0	7	0	75	2	14	45	18
49	Lalmohon, Bhola	C- EOC	80	132	62	106	0	732	27	6	26	167	1	1	21	0	3	13	34	6	10	36	3
50	Barguna	C-EOC	51	244	38	18	0	794	24	0	87	248	0	0	11	44	2	24	34	10	39	82	11
51	Pirojpur	C- EOC	191	258	29	24	0	868	65	0	77	164	0	0	15	0	13	5	42	10	153	256	28
52	Jhalokhati	C-EOC	54	145	56	11	4	1342	22	5	178	157	0	0	5	137	17	2	36	3	200	189	38
53	Patuakhali	C- EOC	250	347	107	50	24	528	102	1	39	132	0	0	29	285	38	5	54	13	198	155	24
Chittagong Division																							
54	Cox's Bazar	C- EOC	277	1003	205	57	0	1073	112	4	473	327	0	0	14	339	7	2	27	3	144	117	36
55	Khagrachari	C- EOC	23	36	24	55	17	261	9	0	57	116	0	1	0	0	4	19	18	0	101	79	8
56	Bandarban	C- EOC	27	87	28	14	0	610	27	0	190	210	0	0	2	0	0	5	9	10	123	202	46
57	Rangamati	C- EOC	119	239	41	41	14	432	43	2	74	161	0	0	8	777	7	22	50	6	90	54	2
58	B. Baria	C- EOC	373	524	106	71	1	414	21	0	421	148	0	0	0	10	42	9	13	75	22	290	45
59	Comilla	C- EOC	238	1056	104	40	18	470	140	0	172	140	0	0	9	1474	3	7	41	7	128	171	48
60	Nangalkot, Comilla	B-EOC	44	61	60	43	0	165	38	0	9	46	0	0	3	0	15	0	27	3	6	22	5
61	Feni	C- EOC	540	1243	99	79	9	85	50	0	345	303	0	0	26	530	5	3	41	3	43	144	13.16667
62	Chandpur	C- EOC	425	786	49	70	14	1015	32	3	122	252	0	1	16	122	39	4	42	9	251	227	52
63	Laxmipur	C- EOC	489	821	178	103	1	209	7	0	120	48	0	1	22	258	44	9	27	22	104	345	112
64	Noakhali	C-EOC	46	60	13	12	0	397	40	0	69	100	0	0	0	0	4	0	2	1	40	31	14
65	Begumganj, Noakhali	C-EOC	76	128	20	27	0	227	30	1	19	67	0	0	0	0	45	4	24	6	117	184	23
66	Pauchuria, Patiya	C- EOC	74	210	62	20	0	626	18	0	52	121	0	0	6	0	1	0	24	12	10	4	4
Sylhet Division																							
67	Sylhet	C-EOC	22	26	4	4	0	426	22	0	16	176	0	0	0	18	11	4	15	2	35	55	6
68	Hobiganj	C- EOC	274	345	109	64	20	857	34	13	92	329	0	2	9	249	27	8	32	17	35	109	31
69	Sunamganj	C-EOC	114	393	113	56	8	450	45	0	21	170	0	0	16	233	40	3	36	13	66	80	1
70	Moulavibazar	C- EOC	212	309	103	45	20	717	3	2	150	288	0	2	0	381	19	2	40	9	208	115	29
Others :																							
71	MCHTI , Dhaka	C-EOC	1637	2320	821	462	295	0	0	0	1361	1120	0	4	14	1689	22	236	21	29	158	193	237
72	MFSTC, Dhaka	C-EOC	1053	2953	270	325	219	774	88	0	530	270	0	0	57	2269	43	298	67	44	102	14	58
73	FWVTI, Rajshahi	C-EOC		349	49	15	7	604	26	8	33	139	0	0	2	7	10	0	5	8	44	55	54
74	Agrabad, Ctg	B-EOC	20	31	8	2	0	384	4	0	8	43	0	0	9	0	2	10	17	12	45	82	23
Total			19551	36433	7904	4560	1224	49761	3930	404	11979	17367	7	26	999	18737	1607	1244	3763	735	7641	8453	3752